

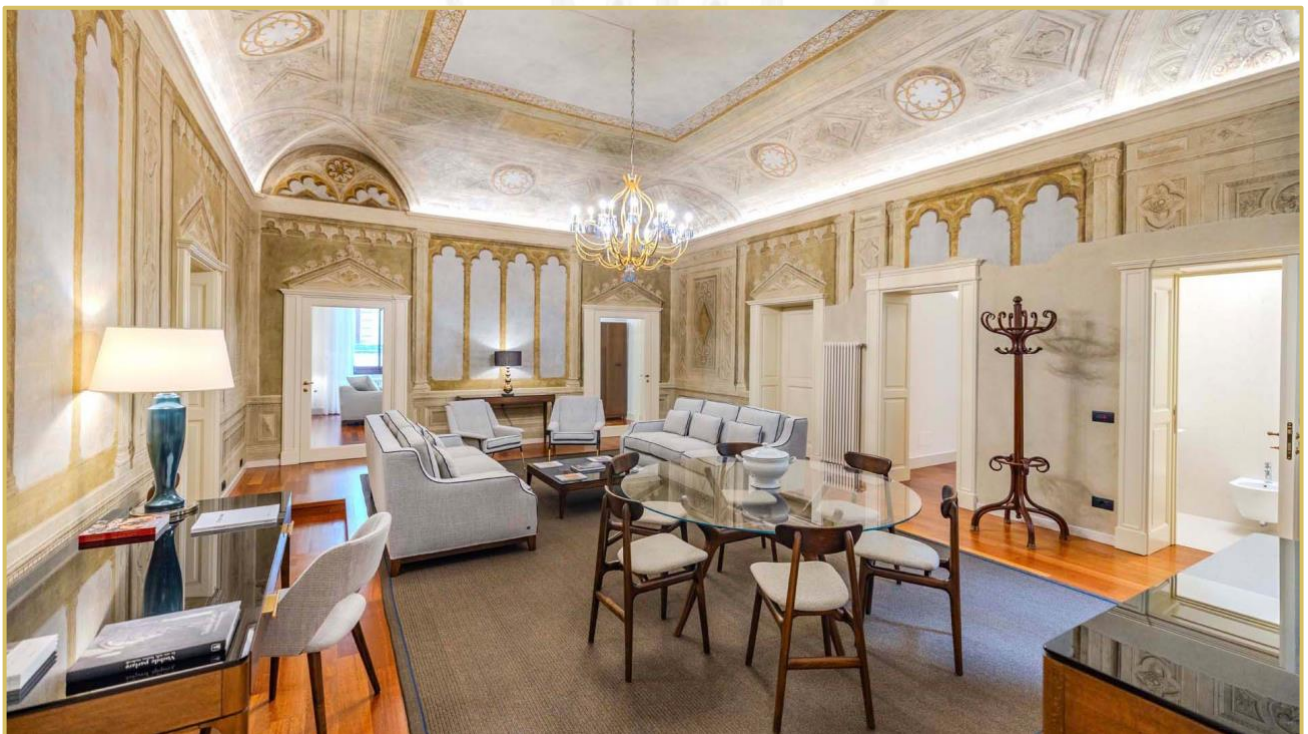
Ref. 2047 – APPARTAMENTO BUONTALENTI

www.romolini.co.uk/en/2047

LUXURY HISTORICAL APARTMENT WITH DUOMO VIEW BALCONY FOR SALE IN FLORENCE

Florence – Florence – Tuscany

[VIEW ON OUR WEBSITE](#)



Interiors
210 sqm

Bedrooms
2

Bathrooms
3

Location
150 m from Piazza del Duomo

Period
16th century

In the historic center of Florence, literally two steps from Piazza del Duomo, stunning 210-sqm apartment on the piano nobile of a historic palazzo owned in the 16th century by the famous Florentine architect Bernardo Buontalenti. The apartment is nowadays a luxury residence with two bedrooms, beautifully frescoed halls and a balcony overlooking the Cathedral and its imposing dome. Furniture included in the sale.

SUMMARY OF THE PROPERTY

REFERENCE #: 2047 – APPARTAMENTO BUONTALENTI

TYPE: luxury apartments

CONDITIONS: luxury finishes

LOCATION: historic center, Piazza del Duomo

ACCESS: excellent

INTERIORS: 210 square meters (2,260 square feet)

TOTAL ROOMS: 6

BEDROOMS: 2

BATHROOMS: 3

ANNEXES: cellar

MAIN FEATURES: frescoed halls, *trompe-l'œil* decorations, moldings, parquet floors, coffered ceilings, wooden beams, hand-painted doors, elevator, air conditioning, stone frames, ashlar doors, balconies with view over the Cathedral, furniture included

ELECTRICITY: already connected

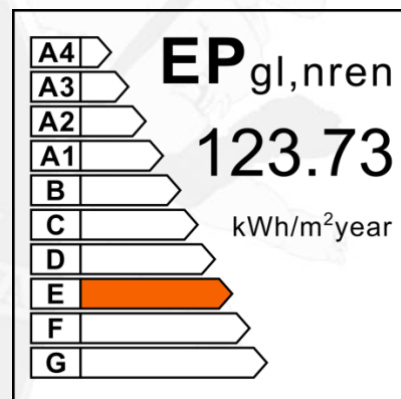
WATER SUPPLY: mains water

TELEPHONE: already connected

ADSL: yes

GAS: municipal network

HEATING SYSTEM: radiators + air conditioning



CLOSEST CITIES AND TOWNS

San Casciano in Val di Pesa (28km; 40'), Greve in Chianti (37km; 50'), Colle di Val d'Elsa (54km; 55'), San Gimignano (60km; 1h 5'), Monteriggioni (62km; 1h), Siena (78km; 1h 10'), Lucca (80km; 1h 15'), Volterra (81km; 1h 25'), Pisa (99km; 1h 40'), Montepulciano (109km; 1h 30'), Pienza (116km; 1h 45')

CLOSEST AIRPORTS

Firenze Vespucci (10km; 20'), Bologna Marconi (105km; 1h 45'), Pisa Galilei (107km; 1h 35'), Perugia San Francesco (160km; 2h), Roma Ciampino (287km; 3h 10'), Milano Linate (301km; 3h 30'), Roma Fiumicino (302km; 3h 15'), Milano Malpensa (355km; 4h)

APPARTAMENTO BUONTALENTI

In the **historic center** of **Florence**, literally two steps from **Piazza del Duomo**, stunning 210-sqm apartment on the *piano nobile* of a **historic palazzo** owned in the 16th century by the famous Florentine architect **Bernardo Buontalenti**. The apartment has been finely restored and many of the original features have been preserved intact.

A beautifully frescoed hall at the center of the apartment was in the past the library of the *palazzo*. This is one of the only two properties on the road to feature two balconies overlooking the cathedral and its dome.

The historic center of Florence, with its boutiques and shops, offers all the necessary services, easily reached even on foot. Other cities of **Tuscany** (San Casciano in Val di Pesa, Greve in Chianti, San Gimignano, Monteriggioni, Siena, Lucca, Pisa...) can all be reached in less than two hours by car.

Florence's airport (10km; 20') is the closest one, but the terminals in Bologna, Pisa, Rome and Milan are very convenient as well.

DESCRIPTION OF THE PROPERTY

The **apartment** (210 sqm – 2,260 sqft, 2 bedrooms and 5 bathrooms) is located on the *piano nobile* of **Palazzo Buontalenti** and can be reached both via a staircase and an elevator. The house is made up of entry, reception hall (formerly the library of the *palazzo*) with dining area and windows overlooking the first internal courtyard, kitchen connected to a second hall overlooking (with two windows) Via dei Servi, wardrobe and laundry, guest bathroom and two bedrooms with en-suite bathroom. One of the bedrooms exit onto balcony over the road offering a stunning view of the Cathedral, while the other overlooks a second internal courtyard that offers quiet and privacy.

The apartment also has an **exclusive cellar** located on the ground floor of the building, which is very useful as a storage room or shed for a bicycle.

STATE AND FINISHES

The apartment is located at the *noble floor* of one of the houses that belonged in the past to the architect **Bernardo Buontalenti** (1531 – 1608) who, however, never lived in this property himself since he used to live near Palazzo Pitti where he worked as a set designer for the Medici family. The current look of the building can be traced to a restoration of the early 18th century based on a project by **Pietro Paolo Giovannozzi** (1658 – 1734), architect and engineer working for the *Capitani di Parte Guelfa*.

The building is still based on a late-Renaissance template, but one can easily see the reworked features added in the 18th century. The ground floor features two huge entrance doorways with an ashlar frame and six more openings currently occupied by boutiques and shops. On the *piano nobile* there are several other windows, all framed in stone, and two balconies. Moving up, the uppermost floors feature the same type of windows but they become simpler and simpler the further they are from the ground.

Inside, the apartment was recently restored and the beautiful finishes have been highlighted. The former library of the *palazzo* (nowadays a stunning reception hall), in particular, boasts frescoed walls that closely resemble the interiors of a classical building with columns, half-columns, bass-reliefs and vaulted ceilings with painted coffered ceilings. The door frames, the only really tridimensional element, harmonically merge with the nearby faux architectures. The salon is one of the jewels of the apartment and represents a unique historical and artistic testimony. The presence of a monumental frescoed gallery, which leads to exclusive rooms doubling as reception rooms, lends the property additional artistic and cultural value.

The floorings of the apartment are covered in solid wood parquet, both in the living and sleeping

area. The other rooms feature painted vaulted ceilings, decorated wooden beams, coffers painted with floral motives and wooden decorations. Moldings running throughout the halls also double as supports for a led lighting system. The air conditioning system covers the whole apartment, as well as a very effective Wi-Fi network.

Doors have been specifically crafted by Tuscan artisans respecting the style of the apartment and have been fully hand-painted. Windows are all equipped with double-glazing, so that thermal dispersion is reduced to a minimum, and grant excellent acoustic insulation.

A small antenna has been also installed on the roof of the building to improve phone reception inside the apartment.

WHAT TO SEE IN FLORENCE

The apartment, thanks to its central position in the heart of Florence along **Via dei Servi**, allows reaching many of the most interesting landmarks in the city on foot. Ranked by distance these are **Piazza del Duomo** with its incredible cathedral (150 m; 2'), **Palazzo Medici** (300 m; 4') and the adjacent Basilica di **San Lorenzo** decorated by Michelangelo and Brunelleschi (380m; 4'), **Piazza della Signoria** (750 m; 10'), the church of **Santa Croce** with the tombs of many Italian artists (850 m; 10'), the church of **Santa Maria Novella** (900 m; 10') next to the central station, the beautiful and unique **Ponte Vecchio** (1.0 km; 12'), the **Uffizi** Gallery (1.0 km; 13'), the imposing Medicean **Fortezza da Basso** (1.2 km; 12'), the impressive **Palazzo Pitti** (1.4 km; 15'), the church of **Santo Spirito** in Oltrarno (1.5 km; 15') and finally the unique and wonderful panoramic terrace of **Piazzale Michelangelo** (2.2 km; 20').

What's more, the many shops and boutiques in the historic center of Florence can be easily reached in a few minutes' walk.







ROMOLINI CHRISTIE'S
IMMOBILIARE INTERNATIONAL REAL ESTATE



ROMOLINI CHRISTIE'S
IMMOBILIARE INTERNATIONAL REAL ESTATE



































ROMOLINI
IMMOBILIARE

CHRISTIE'S
INTERNATIONAL REAL ESTATE

FIND US ON
INSTAGRAM

VISIT OUR
YOUTUBE CHANNEL

AGENZIA ROMOLINI IMMOBILIARE S.R.L.

Piazza Torre di Berta n. 4
52037, Sansepolcro (AR), Tuscany, Italy

(+39) 0575 788 948

www.romolini.com

info@romolini.com