

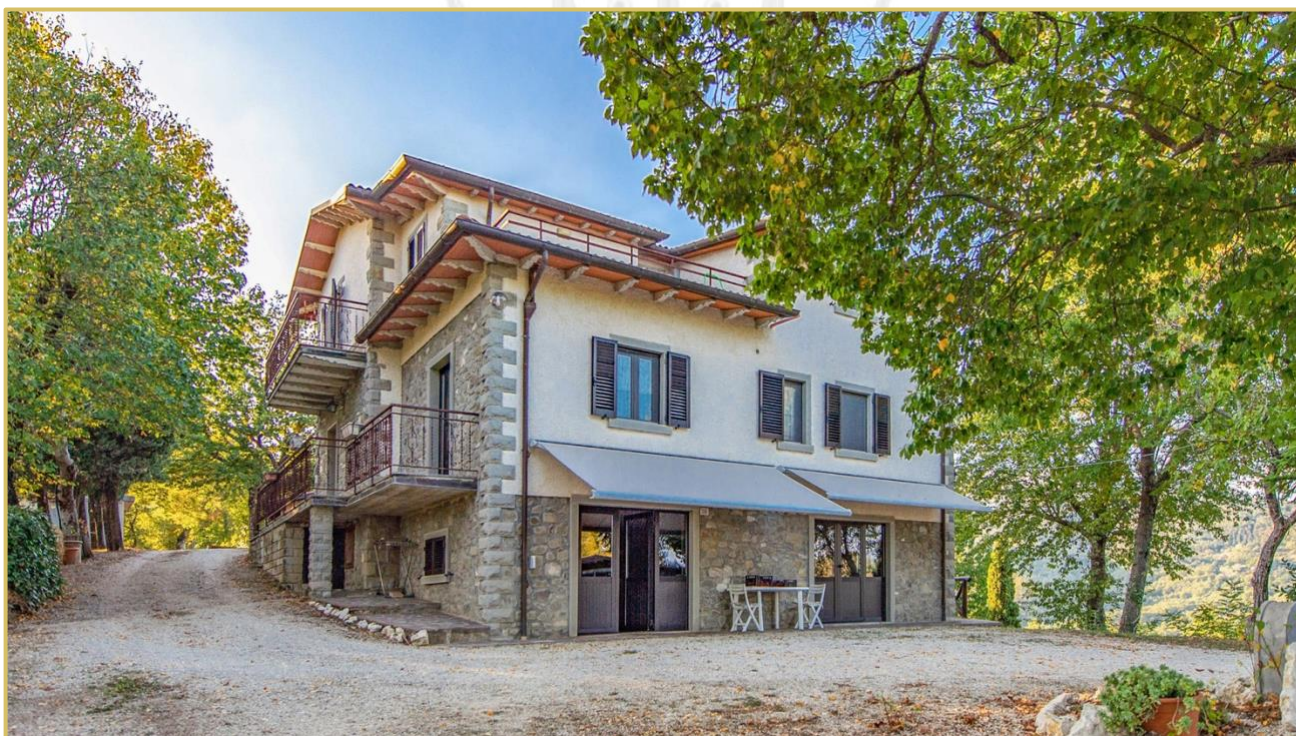
Ref. 2464 – **CASALE PETUNIA**

www.romolini.co.uk/en/2464

COUNTRY HOUSE WITH OUTBUILDINGS FOR SALE IN A PANORAMIC POSITION, TUSCANY

Caprese Michelangelo – Arezzo – Tuscany

VIEW ON OUR WEBSITE



Interiors
700 sqm

Bedrooms
7

Bathrooms
4

Total land
3.5 ha

Olive grove
90 trees

Beautiful restored farmhouse for sale in the Tuscan countryside, a short distance from the medieval village of Caprese Michelangelo in the province of Arezzo. The farmhouse consists of a main building, currently divided into three units, and some outbuildings, all surrounded by a well-maintained garden. The agricultural land covers about 3.5 hectares and includes about 90 olive trees



ROMOLINI
IMMOBILIARE

CHRISTIE'S
INTERNATIONAL REAL ESTATE

SUMMARY OF THE PROPERTY

REFERENCE #: 2464 – CASALE PETUNIA

TYPE: farmhouse with outbuildings

CONDITIONS: habitable

LOCATION: hilly, very panoramic

ACCESS: unpaved road (250 m)

INTERIORS: 700 square meters (7,532 square feet)

TOTAL ROOMS: 20

BEDROOMS: 7

BATHROOMS: 4

ANNEXES: barn, shed, warehouse

MAIN FEATURES: wooden and ceramic flooring, wooden beams, stone fireplaces, panoramic view, barn, land, olive grove, fireplace, oven

EXTERIORS: 3.5 hectares (8.6 acres)

GARDEN: yes, well maintained

SWIMMING POOL: no, but possible

ELECTRICITY: already connected

WATER SUPPLY: mains water + private well

TELEPHONE: to be connected

ADSL: possible

GAS: LPG

HEATING SYSTEM: radiators + fireplaces + stoves

CLOSEST CITIES AND TOWNS

Town with services (3km; 2'), Caprese Michelangelo (4km; 5'), Anghiari (20km; 25'), Sansepolcro (28km; 30'), Arezzo (41km; 55'), Cortona (70km; 1h 15'), Montepulciano (92km; 1h 40'), Pienza (100km; 1h 50'), Perugia (94km; 1h 25'), Florence (118km; 2h), Siena (119km; 2h), San Gimignano (159km; 2h 30')

CLOSEST AIRPORTS

Perugia San Francesco (93km; 1h 15'), Firenze A. Vespucci (133km; 2h), Bologna G. Marconi (175km; 2h 10'), Pisa G. Galilei (194km; 2h 40'), Roma Ciampino (271km; 3h 10'), Roma Fiumicino (285km; 3h 15')

© Agenzia Romolini Immobiliare s.r.l.

Piazza Torre di Berta n. 4, 52037 Sansepolcro (AR), Italy

Tel: +39 0575 788 948 – Mail: info@romolini.com

CASALE PETUNIA

Beautiful **restored farmhouse** for sale in the Tuscan countryside, a short distance from the medieval village of **Caprese Michelangelo** in the province of **Arezzo**. The farmhouse consists of a main building, currently divided into three units, and some outbuildings, all surrounded by a well-maintained garden. The agricultural land covers about **3.5 hectares** and includes about **90 olive trees**.

The property is located in a quiet location a short distance from a small town with all services (3km; 5'), while the historic center of Caprese Michelangelo offers restaurants, bank, post office, pharmacy and all secondary services.

DESCRIPTION OF THE BUILDINGS

The **main house** (290 sqm – 3,120 sqft) is on three levels and is in excellent condition, already habitable without any works. Finishes can benefit from an update, since they are a bit old and no longer in line with modern standards. On the basement floor is a cellar/rustic hall and a storage/laundry. On the other hand, the ground and first floors are divided into three apartments with separate entrances:

- **Apt. N°1:** living room with fireplace, kitchen, three bedrooms, bathroom and storage room;
- **Apt. N°2:** living room with fireplace, two bedrooms, bathroom and cellar;
- **Apt. N°3:** living room, two bedrooms, bathroom and balcony with panoramic view.

Outbuilding A (60 sqm – 646 sqft) houses a garage and a wine/oil cellar.

Outbuilding B (150 sqm – 1,614 sqft), on the other hand, is laid over two levels: the basement has several rooms, currently used for storage, while the ground floor (along with the covered parking area) could be converted into a common room/summer kitchen for guests.

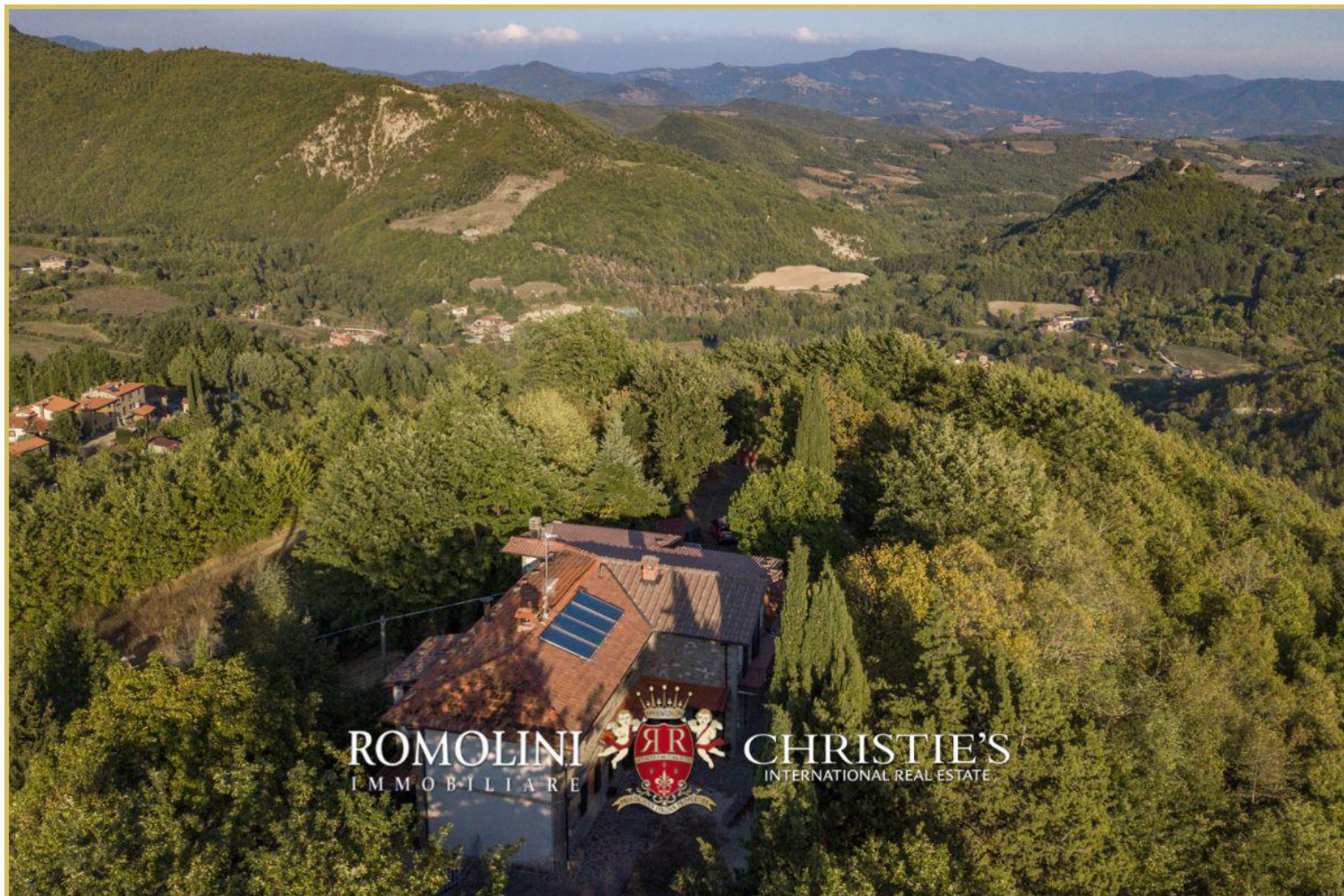
Outbuilding C (200 sqm – 2,152 sqft) is a storage room for agricultural machinery.

EXTERIORS

The building is surrounded by about **3.5 hectares (8.6 acres) of land** that accommodate a well-maintained garden around the cottage, a small **olive grove with 90 trees**, and portions of the land covered by meadows and woods.

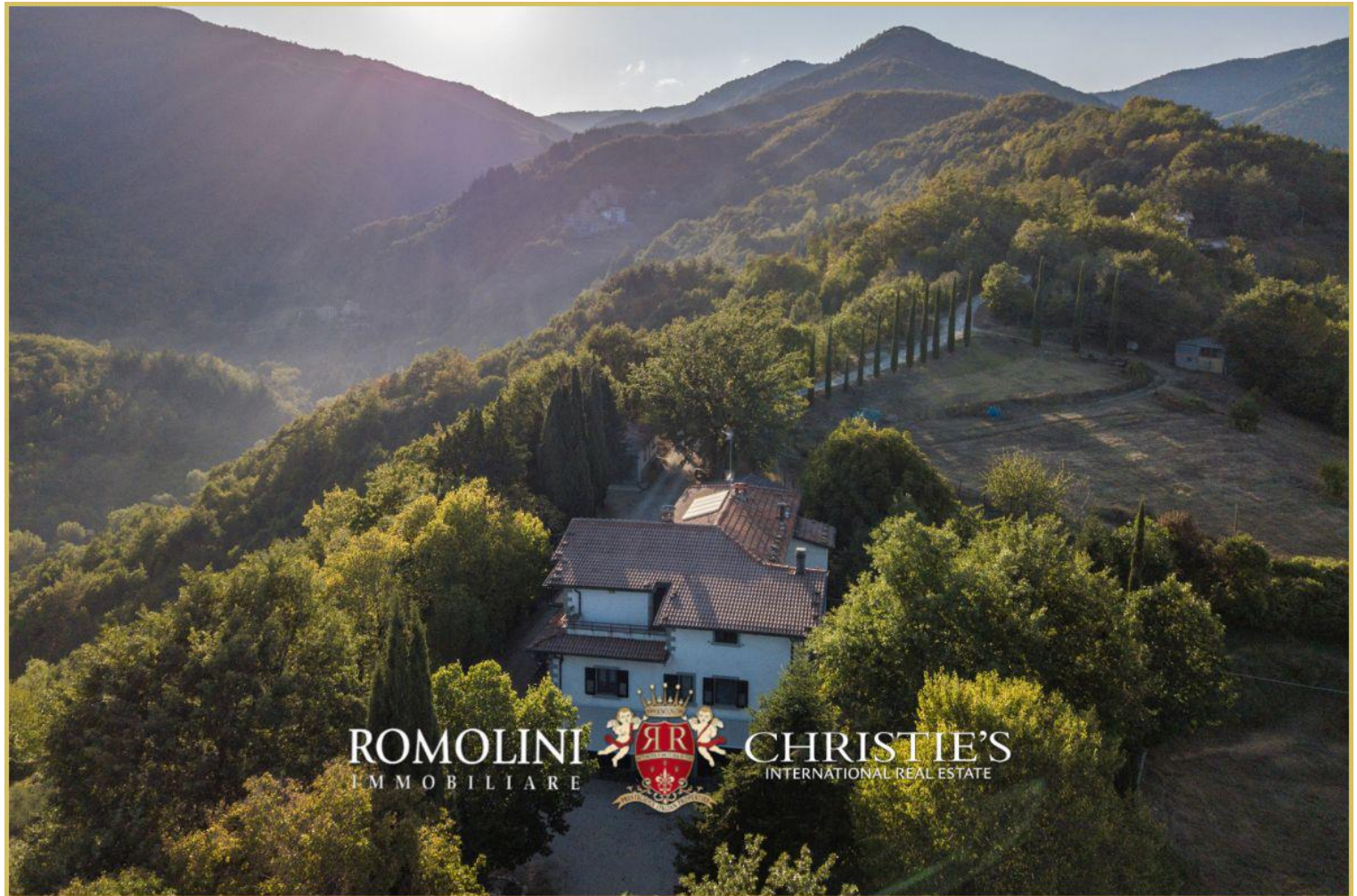
























































ROMOLINI
IMMOBILIARE

CHRISTIE'S
INTERNATIONAL REAL ESTATE

FIND US ON
INSTAGRAM

VISITE OUR
YOUTUBE CHANNEL

AGENZIA ROMOLINI IMMOBILIARE S.R.L.

Piazza Torre di Berta n. 4

52037, Sansepolcro (AR), Tuscany, Italia

(+39) 0575 788 948

www.romolini.com

info@romolini.com