

Ref. 2820 – **CASALE PISTOIA**

[www.romolini.com/en/2820](http://www.romolini.com/en/2820)

## RUSTIC COUNTRY HOUSE WITH GARDEN AND OLIVE GROVE FOR SALE IN PISTOIA, TUSCANY

**Pistoia – Pistoia – Tuscany**



**Interiors**  
398 m<sup>2</sup>

**Bedrooms**  
5

**Bathrooms**  
2+

**Garden**  
1,656 m<sup>2</sup>

**Olive grove**  
4,187 m<sup>2</sup>

Just outside the city of **Pistoia**, in a quiet but very convenient location close to amenities, **rustic farmhouse** for sale. The house (398 m<sup>2</sup>) is on three levels: on the ground floor is the living area with living room, kitchen and dining room, as well as two cellars to be renovated; on the first floor is the sleeping area consisting of five bedrooms and two bathrooms; the attic (formerly a dovecote) is in need of renovation.

Surrounding the building is a **1,600-m<sup>2</sup> garden** with panoramic views of the surrounding countryside, surrounded in turn by an **olive grove** (4,200 m<sup>2</sup>) that allows for the production of a small amount of oil for personal use.

## SUMMARY OF THE PROPERTY

**REFERENCE #:** 2800 – CASALE PISTOIA

**TYPE:** rustic farmhouse

**CONDITIONS:** partially restored

**LOCATION:** hilly, panoramic

**ACCESS:** unpaved road

**INTERIORS:** 398 square meters (4,282 square feet)

**TOTAL ROOMS:** 12

**BEDROOMS:** 5

**BATHROOMS:** 2+

**ANNEXES:** no

**MAIN FEATURES:** stone and brick walls, fireplace, terracotta floors, double glazing, mosquito nets, alarm system, outdoor lighting system, BBQ

**EXTERIOR:** 5,843 square meters (1.4 acres)

**GARDEN:** yes, around the house

**SWIMMING POOL:** no, but possible

**ELECTRICITY:** already connected

**WATER SUPPLY:** mains water

**TELEPHONE:** already connected

**ADSL:** yes

**GAS:** LPG

**ENERGY CERTIFICATE:**  (EP<sub>gl, nren</sub> = 94.90 kWh/m<sup>2</sup>year)

**HEATING SYSTEM:** stove + fireplace

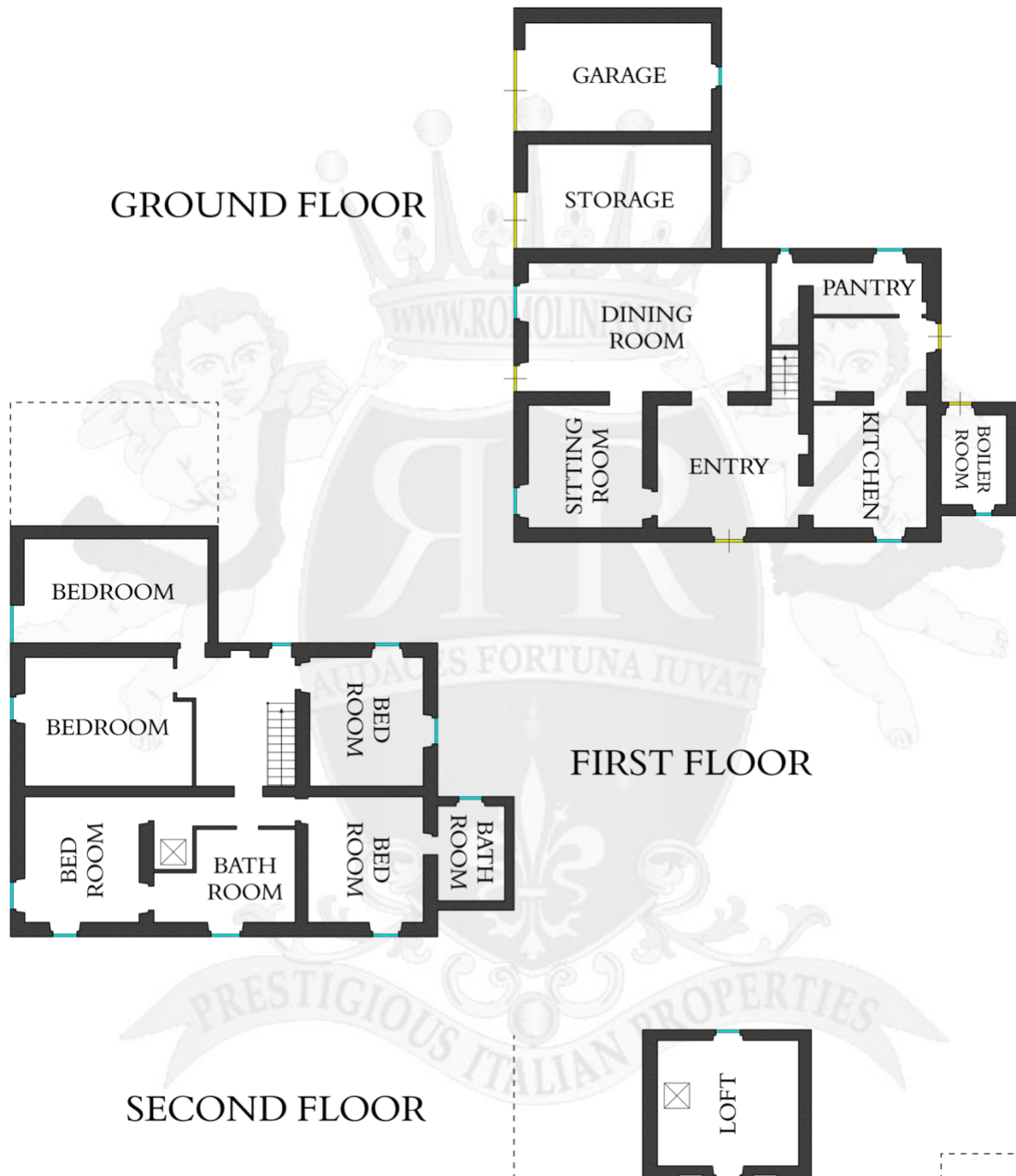
## CLOSEST CITIES AND TOWNS

Closest services (3km; 5'), Pistoia (4km; 7'), Monsummano Terme (10km; 16'), Montecatini Terme (11km; 17'), Prato (24km; 30'), Florence (46km; 55'), Lucca (47km; 37'), Pontedera (48km; 47'), Pisa (68km; 52'), Viareggio (71km; 52'), Camaiore (73km; 55'), Forte dei Marmi (77km; 1h), San Gimignano (88km; 1h15'), Livorno (89km; 1h5'), Volterra (92km; 1h 30'), Siena (106km; 1h 20'), Bolgheri (138km; 1h 30')

## CLOSEST AIRPORTS

Firenze A. Vespucci (34km; 27'), Pisa G. Galilei (76km; 50'), Bologna G. Marconi (116km; 1h 15'), Perugia San Francesco (198km; 2h 5'), Genova C. Colombo (207km; 2h 20'), Milano Linate (315km; 3h 15'), Roma Ciampino (326km; 3h 20'), Roma Fiumicino (340km; 3h 20')

## FLOOR PLANS OF THE HOUSE











ROMOLINI  
IMMOBILIARE



CHRISTIE'S  
INTERNATIONAL REAL ESTATE



ROMOLINI  
IMMOBILIARE



CHRISTIE'S  
INTERNATIONAL REAL ESTATE























ROMOLINI  
IMMOBILIARE

CHRISTIE'S  
INTERNATIONAL REAL ESTATE

FIND US ON  
INSTAGRAM

VISIT OUR  
YOUTUBE CHANNEL

AGENZIA ROMOLINI IMMOBILIARE S.R.L.

Piazza Torre di Berta n. 4  
52037, Sansepolcro (AR), Tuscany, Italy

[www.romolini.com](http://www.romolini.com)

(+39) 0575 788 948

[www.vineyardswineries.com](http://www.vineyardswineries.com)

[info@romolini.com](mailto:info@romolini.com)