

Ref. 2682 – **APPARTAMENTO DUOMO**

[www.romolini.com/en/2682](http://www.romolini.com/en/2682)

## PENTHOUSE WITH PANORAMIC TERRACE AND CATHEDRAL VIEW FOR SALE IN FLORENCE

Florence – Florence – Tuscany



**Interiors**  
151 m<sup>2</sup>

**Bedrooms**  
2

**Bathrooms**  
2

**Terrace**  
9 m<sup>2</sup>

In the heart of the historic center of Florence, a few steps from the Duomo and the city's most famous monuments, lies this exclusive luxury penthouse, located on the top floor of an elegant historic building. The property, which recently underwent a thorough renovation (2024), covers an area of 151 m<sup>2</sup> and features a private panoramic terrace with 360° views of the entire Florentine skyline.

## SUMMARY OF THE PROPERTY

**REFERENCE #:** 2862 – APPARTAMENTO DUOMO

**TYPE:** apartment

**CONDITIONS:** restored

**LOCATION:** historical center

**ACCESS:** excellent, paved road

**INTERIORS:** 151 square meters (1,625 square feet)

**TOTAL ROOMS:** 7

**BEDROOMS:** 2

**BATHROOMS:** 2

**TERRACE:** 9 square meters (97 square feet)

**MAIN FEATURES:** oak parquet flooring, wooden beams, ample windows, *pietra serena* columns, bathroom with resin elements, private terrace ready for a summer kitchen, gallery with laundry

**ELECTRICITY:** already connected

**WATER SUPPLY:** mains water

**TELEPHONE:** already connected

**ADSL:** yes

**GAS:** natural gas

**ENERGY CERTIFICATE:**  (EP<sub>gl, nren</sub> = 217.70 kWh/m<sup>2</sup>year)

**HEATING SYSTEM:** radiators + air conditioning

## CLOSEST CITIES AND TOWNS

Closest services (100m; 1'), Fiesole (7km; 15'), Bagno a Ripoli (8km; 20'), Prato (25km; 35'), San Casciano in Val di Pesa (26km; 40'), Greve in Chianti (30km; 45'), Colle di Val d'Elsa (55km; 1h), Siena (77km; 1h 10'), Arezzo (80km; 1h 10'), Lucca (82km; 1h 15'), Pisa (95km; 1h 35')

## CLOSEST AIRPORTS

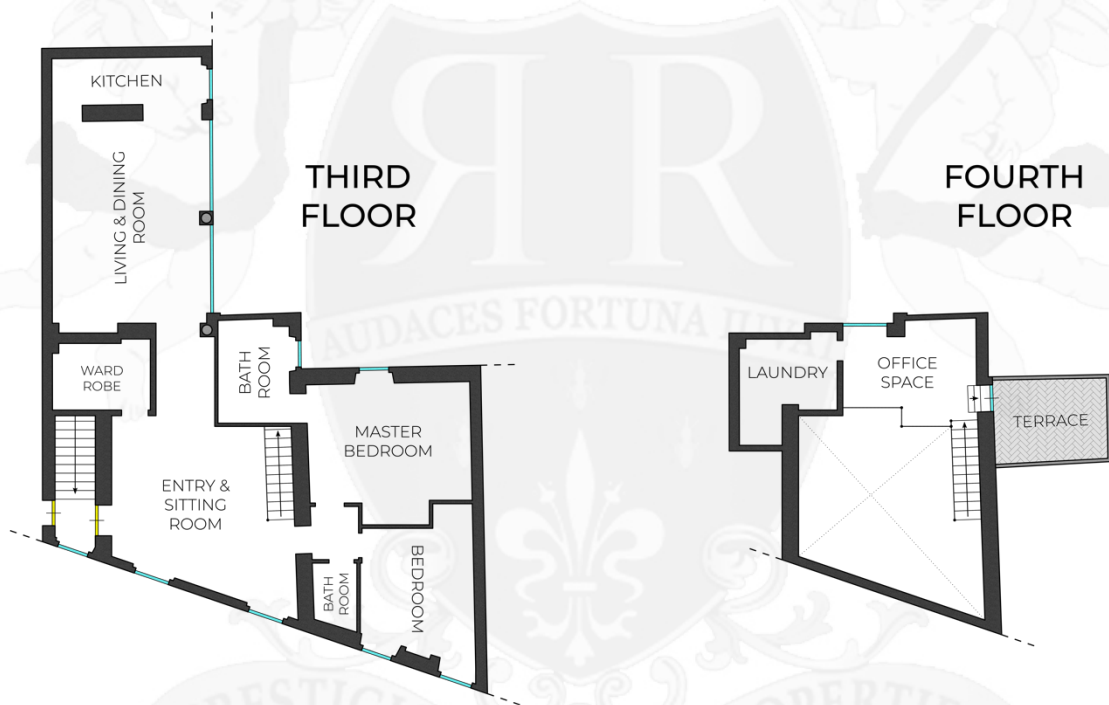
Firenze A. Vespucci (8km; 20'), Pisa G. Galilei (95km; 1h 35'), Bologna G. Marconi (105km; 1h 45'), Perugia San Francesco (150km; 2h), Roma Ciampino (285km; 3h 10'), Roma Fiumicino (305km; 3h 15'), Milano Linate (300km; 3h 30'), Milano Malpensa (355km; 4h)

## APPARTAMENTO DUOMO

In the heart of the **historic center** of **Florence**, a few steps from the **Duomo** and the city's most famous monuments, lies this exclusive luxury penthouse, located on the top floor of an elegant historic building. The property, which recently underwent a thorough renovation (2024), covers an area of 151 m<sup>2</sup> and features a private panoramic terrace with 360° views of the entire Florentine skyline.

The apartment is immediately striking for its large and bright living room, once the palace's loggia and now enhanced by large window openings that provide natural light throughout the day, framed by original *pietra serena* columns. Beamed ceilings and oak parquet floors laid in a herringbone pattern complete the home.

The modern, fully equipped kitchen integrates harmoniously with the living area and offers functional and valuable design solutions. The sleeping area includes two bedrooms (one master) with en-suite bathrooms, finely finished with resin and contemporary details. A convenient mezzanine houses the study area, while a utility room is equipped with laundry room complete with washer and dryer.



The **panoramic terrace** (9 m<sup>2</sup>) is a real jewel of the property, an exclusive view of the Duomo and the entire city, ideal for relaxing moments or outdoor dining thanks to the provision for an outdoor kitchen.

Equipped with heating with radiators and **air conditioning**, the penthouse is sold fully furnished with designer furniture. A unique property that perfectly combines historic charm and contemporary comforts in the heart of the world's most famous Renaissance city.

















































































ROMOLINI  
I M M O B I L I A R E

CHRISTIE'S  
INTERNATIONAL REAL ESTATE

FIND US ON  
INSTAGRAM

VISITE OUR  
YOUTUBE CHANNEL

AGENZIA ROMOLINI IMMOBILIARE S.R.L.

Piazza Torre di Berta n. 4

52037, Sansepolcro (AR), Tuscany, Italia

(+39) 0575 788 948

[www.romolini.com](http://www.romolini.com)

[info@romolini.com](mailto:info@romolini.com)