

Ref. 2898 – **APPARTAMENTO VISTA DUOMO**

www.romolini.com/en/2898

LUXURY PENTHOUSE WITH DUOMO VIEW FOR SALE IN THE HISTORIC CENTER OF FLORENCE

Florence – Florence – Tuscany



Interiors
139 m²

Bedrooms
3

Bathrooms
3

Balconies
8 m²

On the fourth and top floor of a beautiful historic *palazzo* in the heart of Florence, a stone's throw from Piazza del Duomo and Piazza della Signoria, 139-m² apartment with terrace and balcony for sale. The unit can be reached via condominium staircase or elevator: the front door opens onto a bright living room with open kitchen and dining area. A corridor then leads to the service bathroom with adjoining laundry room and, continuing, to the sleeping area composed of master bedroom with en-suite bathroom and two bedrooms with shared bathroom.

SUMMARY OF THE PROPERTY

REFERENCE #: 2898 – APPARTAMENTO VISTA DUOMO

TYPE: apartment

CONDITIONS: restored (2021), luxury finishes

LOCATION: historical center

ACCESS: excellent, paved road

INTERIORS: 139 square meters (1,496 square feet)

TOTAL ROOMS: 5

BEDROOMS: 3

BATHROOMS: 3

ANNEXES: no

MAIN FEATURES: parquet flooring, wooden beams, very bright rooms, windows with double glazing, marble bathrooms, balcony and terrace overlooking the inner courtyard, view of Florence Cathedral, *Gullo* kitchen, *Gaggenau* appliances, furniture included in the selling price

EXTERIOR: no

GARDEN: no

SWIMMING POOL: no

ELECTRICITY: already connected

WATER SUPPLY: mains water

TELEPHONE: to be connected

ADSL: yes

GAS: natural gas

ENERGY CERTIFICATE:  (EP_{gl, nren} = 148.99 kWh/m²year)

HEATING SYSTEM: under the floor + air conditioning

CLOSEST CITIES AND TOWNS

Closest services (50m; 1'), San Casciano in Val di Pesa (28km; 40'), Greve in Chianti (37km; 50'), Colle di Val d'Elsa (54km; 55'), San Gimignano (60km; 1h 5'), Monteriggioni (62km; 1h), Siena (78km; 1h 10'), Lucca (80km; 1h 15'), Volterra (81km; 1h 25'), Pisa (99km; 1h 40'), Montepulciano (109km; 1h 30'), Pienza (116km; 1h 45')

CLOSEST AIRPORTS

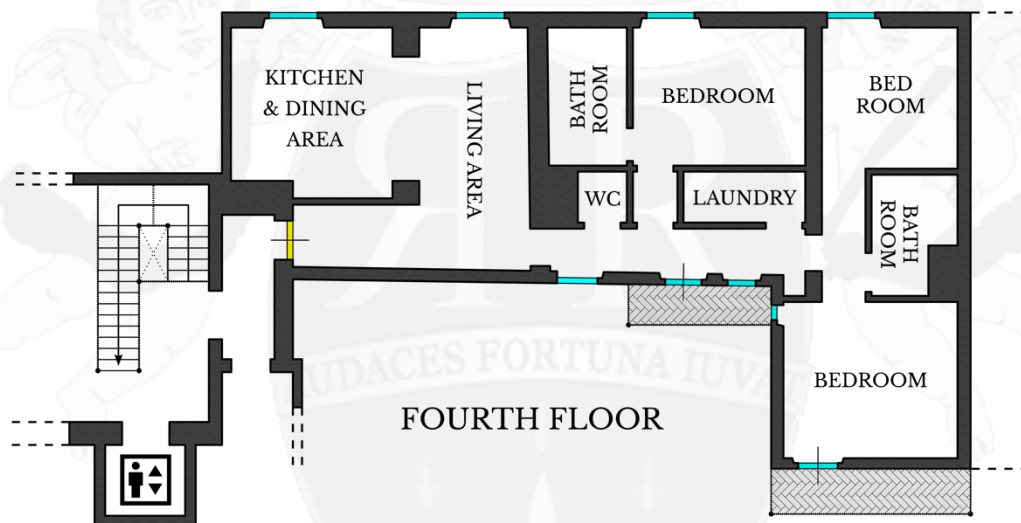
Firenze A. Vespucci (10km; 20'), Bologna G. Marconi (105km; 1h 45'), Pisa G. Galilei (107km; 1h 35'), Perugia San Francesco (160km; 2h), Roma Ciampino (287km; 3h 10'), Milano Linate (301km; 3h 30'), Roma Fiumicino (302km; 3h 15'), Milano Malpensa (355km; 4h)

APPARTAMENTO VISTA DUOMO

On the fourth and top floor of a beautiful **historic palazzo** in the heart of **Florence**, a stone's throw from **Piazza del Duomo** and **Piazza della Signoria**, 139-m² **apartment** with terrace and balcony for sale. The unit can be reached via condominium staircase or elevator: the front door opens onto a bright living room with open kitchen and dining area. A corridor then leads to the service bathroom with adjoining laundry room and, continuing, to the sleeping area composed of master bedroom with en-suite bathroom and two bedrooms with shared bathroom. One of the bedrooms has a small **private terrace** overlooking the courtyard, while from the corridor there is access to a small **balcony**, also overlooking the inner courtyard.

The property was **fully renovated in 2021**, including common spaces, and the apartment has been finished with fine elements including herringbone parquet floors, marble bathrooms, double-glazed window frames, *Gullo* kitchen and *Gaggenau* appliances.

FLOOR PLAN OF THE APARTMENT





































ROMOLINI
I M M O B I L I A R E

CHRISTIE'S
INTERNATIONAL REAL ESTATE

FIND US ON
INSTAGRAM

VISITE OUR
YOUTUBE CHANNEL

AGENZIA ROMOLINI IMMOBILIARE S.R.L.

Piazza Torre di Berta n. 4

52037, Sansepolcro (AR), Tuscany, Italia

(+39) 0575 788 948

www.romolini.com

info@romolini.com