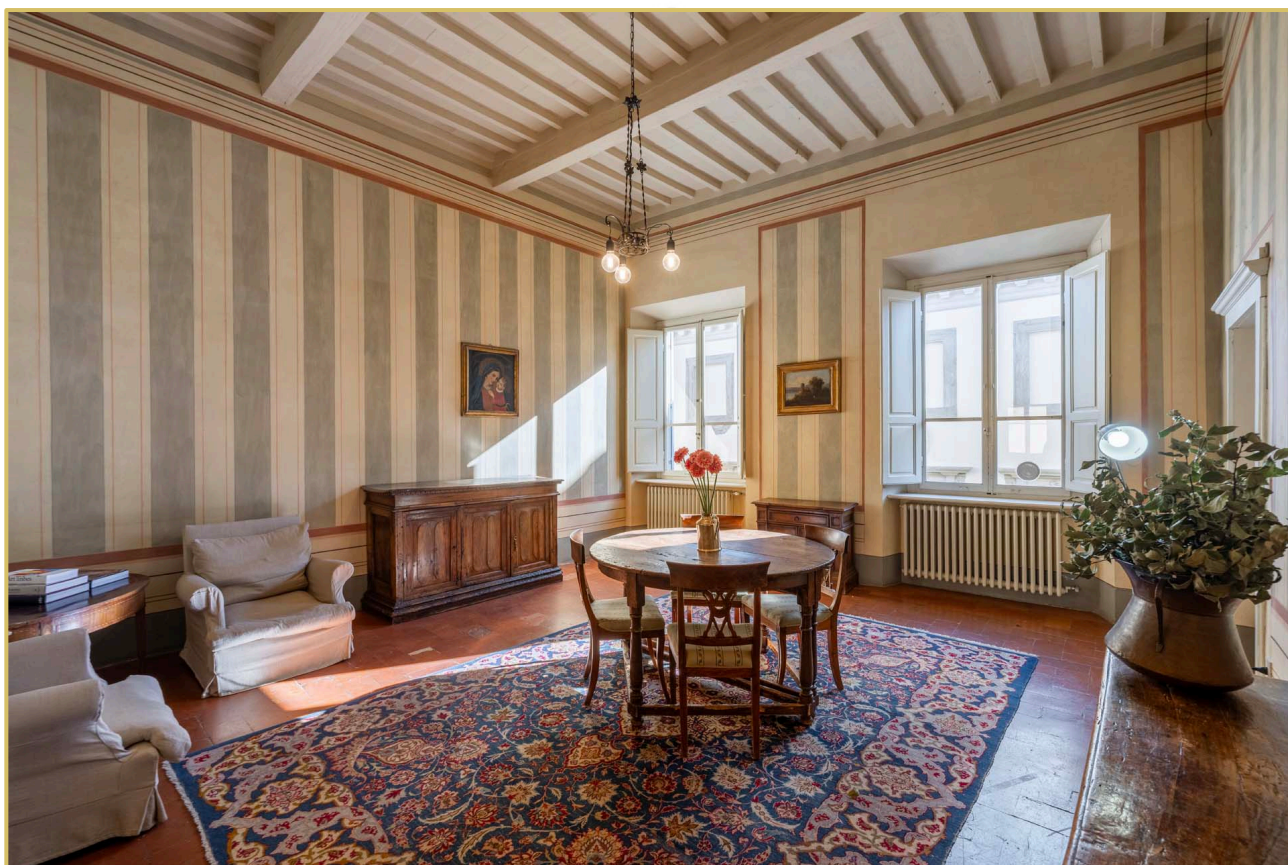


## LUXURY FRESCOED PENTHOUSE FOR SALE IN THE HISTORICAL CENTER OF AREZZO, TUSCANY

Arezzo – Arezzo – Tuscany



**Interiors**  
294 m<sup>2</sup>

**Bedrooms**  
3

**Bathrooms**  
4

**Terrace**  
6 m<sup>2</sup>

In the historical center of **Arezzo**, along **Corso Italia** and inside a well-known **historical building** of the city, a 294 m<sup>2</sup> **apartment** with **terrace** for sale. The building's main portal opens onto a long vaulted corridor with grotesque frescoes by **Teofilo Torri** (1604) that leads to the building's inner courtyard and condominium staircase.

The dwelling is on the second and top floor of the building and consists of an entrance hall, kitchen, large double living room, dining room, three bedrooms and three bathrooms. An internal stone staircase leads to the small terrace (6 m<sup>2</sup>) and the altana with bathroom, as well as an attic that is very useful as a storage room.

The property has been recently renovated and features large rooms with high ceilings and large windows, as well as still having original terracotta floors and well-preserved frescoes.

## SUMMARY OF THE PROPERTY

**REFERENCE #:** 2910 – APPARTAMENTO TEOFILO

**TYPE:** apartment

**CONDITIONS:** restored, luxury finishes

**LOCATION:** historical center

**ACCESS:** excellent, paved road

**INTERIORS:** 294 square meters (3,163 square feet)

**TOTAL ROOMS:** 7

**BEDROOMS:** 3

**BATHROOMS:** 4

**ANNEXES:** no

**MAIN FEATURES:** historic palazzo, terracotta floors, wooden beams, frescoed walls, original fireplaces, overlooking the courtyard, private terrace, condominium entrance with frescoes by Teofilo Torri

**EXTERIOR:** 6 square meters (64 square feet)

**GARDEN:** no, but terrace

**SWIMMING POOL:** no

**ELECTRICITY:** already connected

**WATER SUPPLY:** mains water

**TELEPHONE:** already connected

**ADSL:** yes

**GAS:** natural gas

**ENERGY CERTIFICATE:**  (EP<sub>gl, nren</sub> = 407.87 kWh/m<sup>2</sup>year)

**HEATING SYSTEM:** radiators

## CLOSEST CITIES AND TOWNS

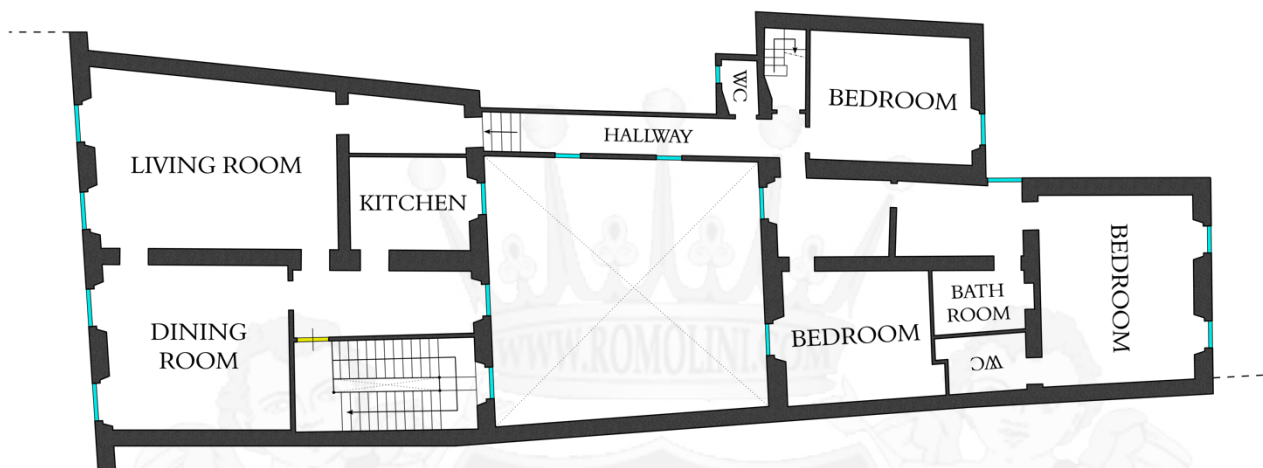
Closest services (50m; 1'), Castiglion Fiorentino (18km; 20'), Cortona (29km; 35'), Anghiari (31km; 25'), Montevarchi (37km; 30'), Sansepolcro (37km; 35'), Montepulciano (53km; 50'), Pienza (60km; 1h), Florence (77km; 1h 10'), Siena (70km; 1h), Montalcino (80km; 1h 20'), Orvieto (109km; 1h 10'), San Gimignano (119km; 1h 30')

## CLOSEST AIRPORTS

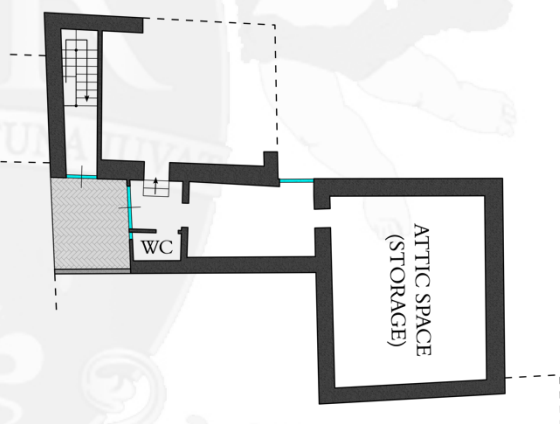
Perugia San Francesco (91km; 1h 10'), Firenze A. Vespucci (94km; 1h 5'), Pisa G. Galilei (155km; 1h 45'), Bologna G. Marconi (176km; 1h 55'), Roma Ciampino (231km; 2h 20'), Roma Fiumicino (245km; 2h 20')

## FLOOR PLANS OF THE APARTMENT

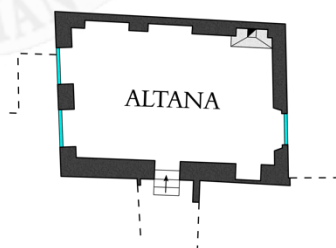
### SECOND FLOOR



### THIRD FLOOR



### FOURTH FLOOR











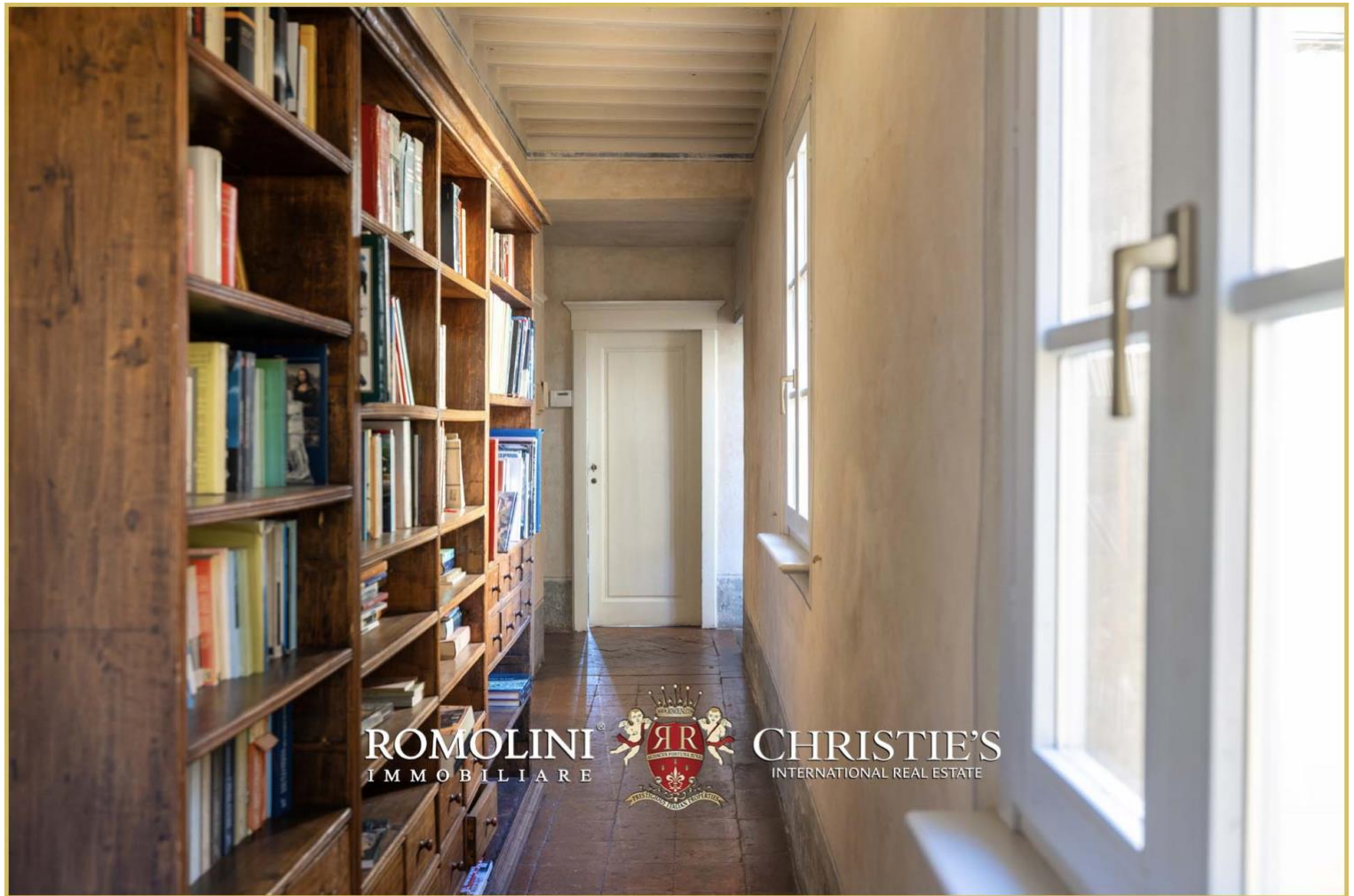












ROMOLINI  
IMMOBILIARE

CHRISTIE'S  
INTERNATIONAL REAL ESTATE



ROMOLINI  
IMMOBILIARE

CHRISTIE'S  
INTERNATIONAL REAL ESTATE





























































ROMOLINI  
I M M O B I L I A R E

CHRISTIE'S  
INTERNATIONAL REAL ESTATE

FIND US ON  
INSTAGRAM

VISITE OUR  
YOUTUBE CHANNEL

AGENZIA ROMOLINI IMMOBILIARE S.R.L.

Piazza Torre di Berta n. 4

52037, Sansepolcro (AR), Tuscany, Italia

(+39) 0575 788 948

[www.romolini.com](http://www.romolini.com)

[info@romolini.com](mailto:info@romolini.com)