

Ref. 2930 – APPARTAMENTO GASTONE

www.romolini.com/en/2930

RESTORED APARTMENT FOR SALE NEAR PORTA ROMANA, HISTORICAL CENTER OF FLORENCE

Florence – Florence – Tuscany



Interiors
93 m²

Bedrooms
1

Bathrooms
1



In the heart of the historic center of Florence, a few steps from the Boboli Gardens, on Via Romana, adjacent to the Museum of Natural History “La Specola” and only 700 meters from Ponte Vecchio and the Arno River, refined 93 m² apartment located inside a prestigious historic building dating back to the 15th century.

SUMMARY OF THE PROPERTY

REFERENCE #: 2930 – APPARTAMENTO GASTONE

TYPE: apartment

CONDITIONS: restored

LOCATION: historic center, Porta Romana

ACCESS: excellent

INTERIORS: 93 square meters (1,000 square feet)

TOTAL ROOMS: 3

BEDROOMS: 1

BATHROOMS: 1

ANNEXES: no

MAIN FEATURES: parquet flooring, vaulted ceilings, large windows, marble bathroom, air conditioning, condominium courtyard

EXTERIOR: no

GARDEN: no

SWIMMING POOL: no

ELECTRICITY: already connected

WATER SUPPLY: mains water

TELEPHONE: already connected

ADSL: yes

GAS: natural gas

HEATING SYSTEM: fan-coils + air conditioning

CLOSEST CITIES AND TOWNS

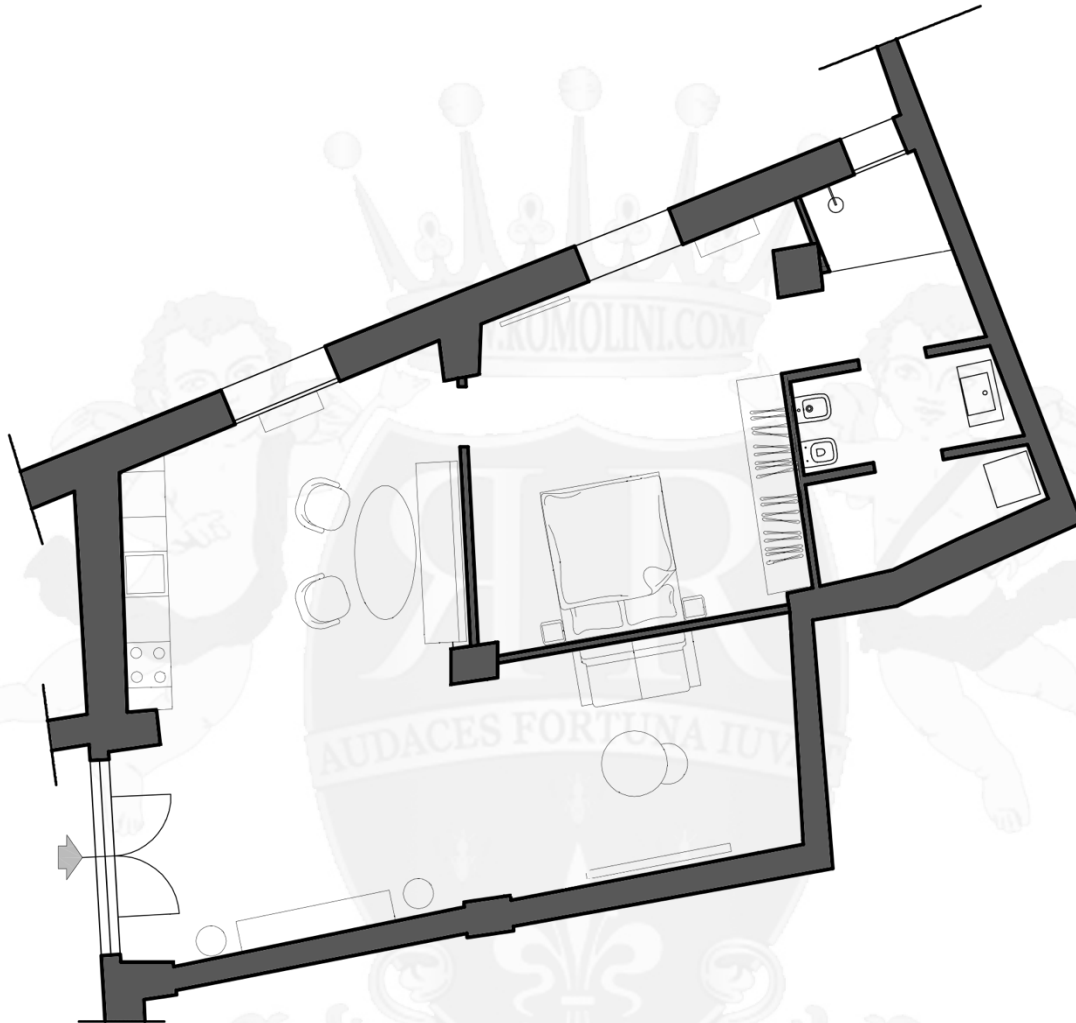
Closest services (50m; 1'), San Casciano in Val di Pesa (28km; 40'), Greve in Chianti (37km; 50'), Colle di Val d'Elsa (54km; 55'), San Gimignano (60km; 1h 5'), Monteriggioni (62km; 1h), Siena (78km; 1h 10'), Lucca (80km; 1h 15'), Volterra (81km; 1h 25'), Pisa (99km; 1h 40'), Montepulciano (109km; 1h 30'), Pienza (116km; 1h 45')

CLOSEST AIRPORTS

Firenze A. Vespucci (10km; 20'), Bologna G. Marconi (105km; 1h 45'), Pisa G. Galilei (107km; 1h 35'), Perugia San Francesco (160km; 2h), Roma Ciampino (287km; 3h 10'), Milano Linate (301km; 3h 30'), Roma Fiumicino (302km; 3h 15'), Milano Malpensa (355km; 4h)

APPARTAMENTO GASTONE

In the heart of the **historic center** of **Florence**, a few steps from the **Boboli Gardens**, on **Via Romana**, adjacent to the **Museum of Natural History "La Specola"** and only 700 meters from Ponte Vecchio and the Arno River, refined 93 m² apartment located inside a prestigious historic building dating back to the **15th century**.



The property, with access from the building's condominium courtyard, has been completely renovated and furnished with great attention to detail, using high quality materials and finishes. The entrance opens onto a large and bright living room characterized by striking vaulted ceilings, flanked by a fully equipped kitchen area.

The sleeping area includes a spacious master bedroom and an elegant bathroom with a large shower lined with marble slabs. The apartment is equipped with air conditioning, new fixtures and parquet floors, ensuring modern comfort while respecting the historic character of the building.

The location is absolutely privileged: the Uffizi Gallery can be reached in about 10 minutes on foot, while the Duomo of Florence is about 15 minutes away. A solution of great charm and representation, ideal both as an exclusive residence and as a prestigious investment, in front of one of the most iconic historic gardens of the city.















ROMOLINI
I M M O B I L I A R E

CHRISTIE'S
INTERNATIONAL REAL ESTATE

FIND US ON
INSTAGRAM

VISITE OUR
YOUTUBE CHANNEL

AGENZIA ROMOLINI IMMOBILIARE S.R.L.

Piazza Torre di Berta n. 4

52037, Sansepolcro (AR), Tuscany, Italia

(+39) 0575 788 948

www.romolini.com

info@romolini.com