

HISTORIC PROPERTY WITH TERRACES AND GARDEN FOR SALE IN FLORENCE

Florence – Florence – Tuscany



Interiors
185 m²

Bedrooms
3 (up to 4)

Bathrooms
3

Garden
55 m²

Terrace
62 m²

Courtyard
18 m²

In one of the most authentic and prestigious parts in the heart of Florence, just above Ponte Vecchio, in the refined Costa San Giorgio, lies a truly unique residence where elegance, tranquility, and beauty come together in perfect harmony. The second floor leads to the true highlight of the property: magnificent multi-level terraces offering breathtaking 360-degree views over Florence and the surrounding hills – an extraordinary setting that provides unforgettable moments throughout the day.

SUMMARY OF THE PROPERTY

REFERENCE #: 2986 – DIMORA SAN GIORGIO

TYPE: historic property

CONDITIONS: restored

LOCATION: historical center

ACCESS: excellent, paved road

INTERIORS: 185 square meters (1,991 square feet)

TOTAL ROOMS: 6

BEDROOMS: 3 (up to 4)

BATHROOMS: 4

ANNEXES: no

MAIN FEATURES: historic building, exposed wooden beams, hardwood floors, stairs made of *pietra serena*, private garden, panoramic terrace overlooking Florence

EXTERIOR: 55 square meters (592 square feet)

GARDEN: yes

SWIMMING POOL: no

ELECTRICITY: already connected

WATER SUPPLY: mains water

TELEPHONE: already connected

ADSL: yes

GAS: natural gas

HEATING SYSTEM: radiators + air conditioning

CLOSEST CITIES AND TOWNS

Closest services (100m; 2'), San Casciano in Val di Pesa (28km; 40'), Greve in Chianti (37km; 50'), Colle di Val d'Elsa (54km; 55'), San Gimignano (60km; 1h 5'), Monteriggioni (62km; 1h), Arezzo (77km; 1h 5'), Siena (78km; 1h 10'), Lucca (78km; 1h 10'), Volterra (81km; 1h 25'), Pisa (99km; 1h 40'), Montepulciano (109km; 1h 30'), Pienza (116km; 1h 45'), Montalcino (117km; 1h 50')

CLOSEST AIRPORTS

Firenze A. Vespucci (8km; 20'), Bologna G. Marconi (105km; 1h 45'), Pisa G. Galilei (107km; 1h 35'), Perugia San Francesco (160km; 2h), Roma Ciampino (287km; 3h 10'), Milano Linate (301km; 3h 30'), Roma Fiumicino (302km; 3h 15'), Milano Malpensa (355km; 4h)

DIMORA SAN GIORGIO

In one of the most authentic and prestigious parts in the heart of **Florence**, just above **Ponte Vecchio**, in the refined **Costa San Giorgio**, lies a truly unique residence where elegance, tranquility, and beauty come together in perfect harmony.

Access to the property is through a charming private pedestrian lane, enclosed by historic walls, immediately setting the tone for an atmosphere of exclusivity and privacy. To further enhance charm and privacy, entrance to the townhouse is through a **private walled courtyard** paved in stone and welcoming visitors in this oasis of peace and beauty

The property (185 m² – 1,991 ft²) has been impeccably renovated with top-quality finishes and meticulous attention to every detail.

Upon entering, you are welcomed into a bright and inviting living area with a dining space, overlooking a delightful and well-maintained **private inner garden**, measuring 55 m² and offering a sense of absolute peace and serenity. The spacious, fully equipped kitchen is designed to combine functionality with refined aesthetics.

On the same level, there is also a comfortable guest bedroom with its own dedicated bathroom, ensuring privacy and comfort.

Moving up to the first floor through a charming stone spiral staircase, the sleeping area features a stunning master bedroom, enhanced by double access to two private terraces. On the same floor, there is a second double bedroom with its own bathroom, as well as a third room, ideal as a study or multifunctional space.

The second floor leads to the true highlight of the property: magnificent multi-level terraces offering breathtaking **360-degree views over Florence** and the surrounding hills – an extraordinary setting that provides unforgettable moments throughout the day.

The property is further complemented by a large cellar with a separate laundry room, as well as a technical room equipped with a boiler, water pressure system, and water softener.

An exclusive residence, located in one of the most sought-after areas of the city, exceptionally quiet and private – perfect for those who wish to experience Florence from a truly privileged perspective.





ROMOLINI
IMMOBILIARE



CHRISTIE'S
INTERNATIONAL REAL ESTATE



ROMOLINI
IMMOBILIARE



CHRISTIE'S
INTERNATIONAL REAL ESTATE





ROMOLINI IMMOBILIARE



CHRISTIE'S INTERNATIONAL REAL ESTATE



ROMOLINI IMMOBILIARE



CHRISTIE'S INTERNATIONAL REAL ESTATE



ROMOLINI
IMMOBILIARE

RR
FONDATARE 1872

CHRISTIE'S
INTERNATIONAL REAL ESTATE



ROMOLINI
IMMOBILIARE

RR
FONDATARE 1872

CHRISTIE'S
INTERNATIONAL REAL ESTATE









ROMOLINI
IMMOBILIARE



CHRISTIE'S
INTERNATIONAL REAL ESTATE

ATLANTIC LIGHT
THE WEST COAST OF IRELAND BY PHOTOGRAFIE



ROMOLINI
IMMOBILIARE



CHRISTIE'S
INTERNATIONAL REAL ESTATE









ROMOLINI
IMMOBILIARE



CHRISTIE'S
INTERNATIONAL REAL ESTATE

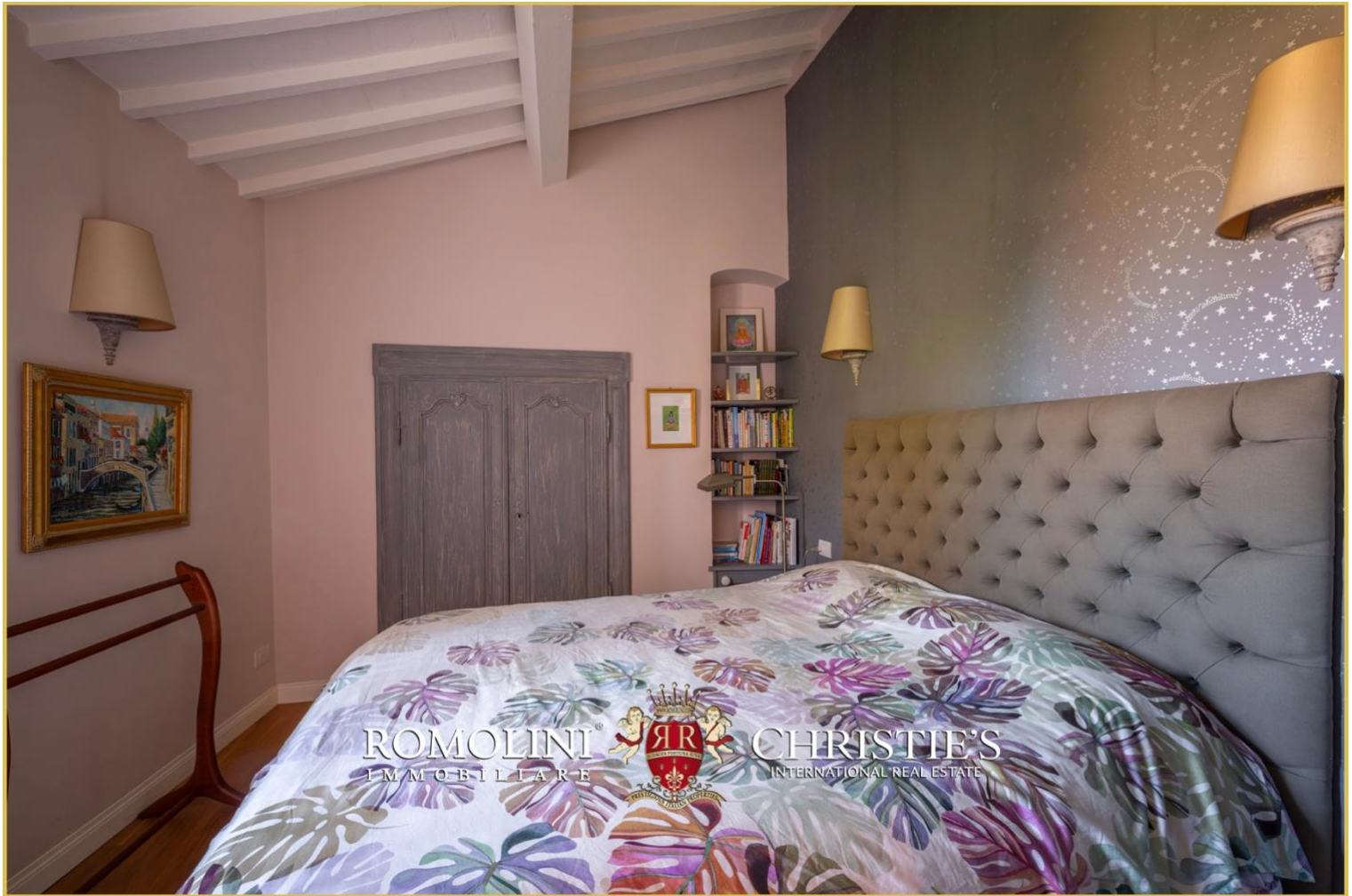


ROMOLINI
IMMOBILIARE



CHRISTIE'S
INTERNATIONAL REAL ESTATE









ROMOLINI[®]
IMMOBILIARE



CHRISTIE'S[®]
INTERNATIONAL REAL ESTATE



ROMOLINI[®]
IMMOBILIARE



CHRISTIE'S[®]
INTERNATIONAL REAL ESTATE



ROMOLINI
I M M O B I L I A R E

CHRISTIE'S
INTERNATIONAL REAL ESTATE

FIND US ON
INSTAGRAM

VISITE OUR
YOUTUBE CHANNEL

AGENZIA ROMOLINI IMMOBILIARE S.R.L.

Piazza Torre di Berta n. 4

52037, Sansepolcro (AR), Tuscany, Italia

(+39) 0575 788 948

www.romolini.com

info@romolini.com