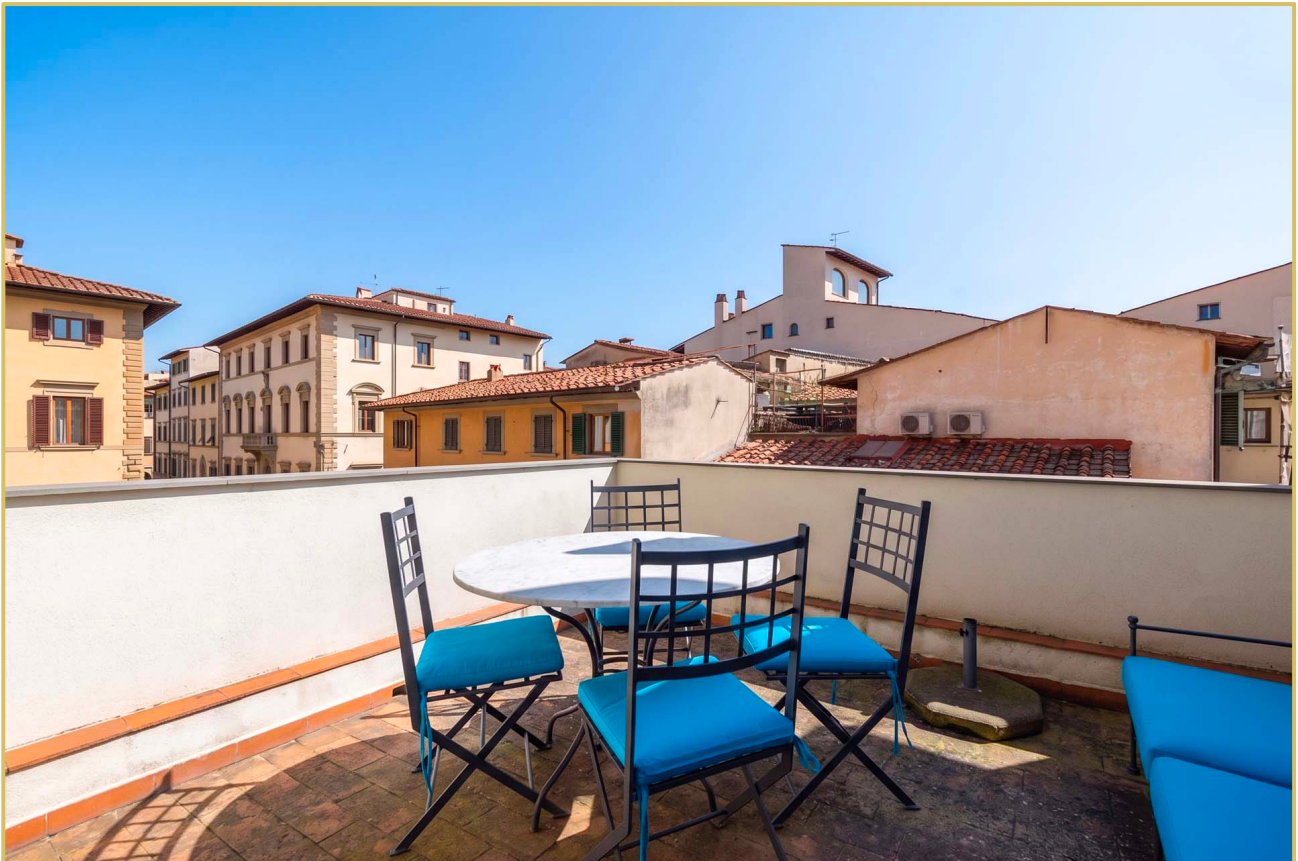


APARTMENT WITH TERRACE FOR SALE IN PIAZZA DEL CARMINE, FLORENCE

Florence – Florence – Tuscany



Interiors
158 m²

Bedrooms
3

Bathrooms
2

Terrace
12 m²

Located in the historic center of Florence, in one of the city's most characteristic and sought-after areas, this 158-m² apartment is offered for sale, featuring a livable terrace with open views over Piazza del Carmine and the Church of Santa Maria del Carmine. The property has recently undergone a complete renovation, carried out with great attention to material selection and with full respect for its original historical features, most notably the late 16th-century frescoes, which represent a highly valuable and distinctive element.

SUMMARY OF THE PROPERTY

REFERENCE #: 2988 – APPARTAMENTO PIAZZA DEL CARMINE

TYPE: apartment

CONDITIONS: restored

LOCATION: historical center

ACCESS: excellent, paved road

INTERIORS: 158 square meters (1,700 square feet)

TOTAL ROOMS: 9

BEDROOMS: 3

BATHROOMS: 2

ANNEXES: no

MAIN FEATURES: terracotta flooring, wooden beams, wallpaper, panoramic terrace overlooking Piazza del Carmine

EXTERIOR: 12 square meters (129 square feet)

GARDEN: no, but terrace

SWIMMING POOL: no

ELECTRICITY: already connected

WATER SUPPLY: mains water

TELEPHONE: to be connected

ADSL: yes

GAS: natural gas

ENERGY CERTIFICATE:  (EP_{gl, nren} = 253.77 kWh/m²year)

HEATING SYSTEM: radiators + air conditioning

CLOSEST CITIES AND TOWNS

Closest services (50m; 2'), San Casciano in Val di Pesa (28km; 40'), Greve in Chianti (37km; 50'), Colle di Val d'Elsa (54km; 55'), San Gimignano (60km; 1h 5'), Monteriggioni (62km; 1h), Arezzo (77km; 1h 5'), Siena (78km; 1h 10'), Lucca (78km; 1h 10'), Volterra (81km; 1h 25'), Pisa (99km; 1h 40'), Montepulciano (109km; 1h 30'), Pienza (116km; 1h 45'), Montalcino (117km; 1h 50')

CLOSEST AIRPORTS

Firenze A. Vespucci (8km; 20'), Bologna G. Marconi (105km; 1h 45'), Pisa G. Galilei (107km; 1h 35'), Perugia San Francesco (160km; 2h), Roma Ciampino (287km; 3h 10'), Milano Linate (301km; 3h 30'), Roma Fiumicino (302km; 3h 15'), Milano Malpensa (355km; 4h)

APPARTAMENTO PIAZZA DEL CARMINE

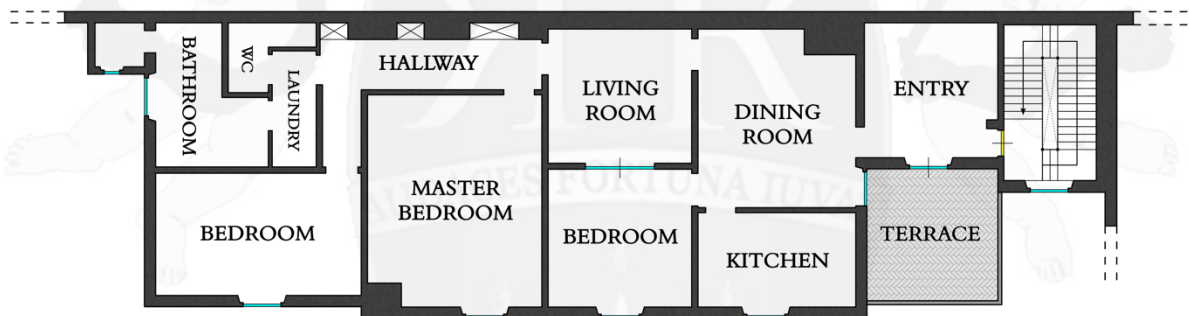
Located in the **historic center of Florence**, in one of the city's most characteristic and sought-after areas, this 158-m² **apartment** is offered for sale, featuring a livable terrace with open views over **Piazza del Carmine** and the **Church of Santa Maria del Carmine**.

The property has recently undergone a complete renovation, carried out with great attention to material selection and with full respect for its original historical features, most notably the **late 16th-century frescoes**, which represent a highly valuable and distinctive element.

The interior layout is well organized and articulated: the living area includes an elegant frescoed reception room, a bright dining room, and a separate kitchen, while the sleeping area comprises three generously sized double bedrooms and two modern bathrooms.

The **terrace** (12 m² – 129 ft²), directly connected to the living spaces, adds significant value to the property, offering a rare outdoor area in this urban context, ideal for relaxing while enjoying charming views over the surrounding rooftops and historic landmarks.

The property also represents an attractive investment opportunity, as it is already successfully operating within the short-term rental market, while also being perfectly suited as a refined private residence or *pied-à-terre*.



SECOND
FLOOR









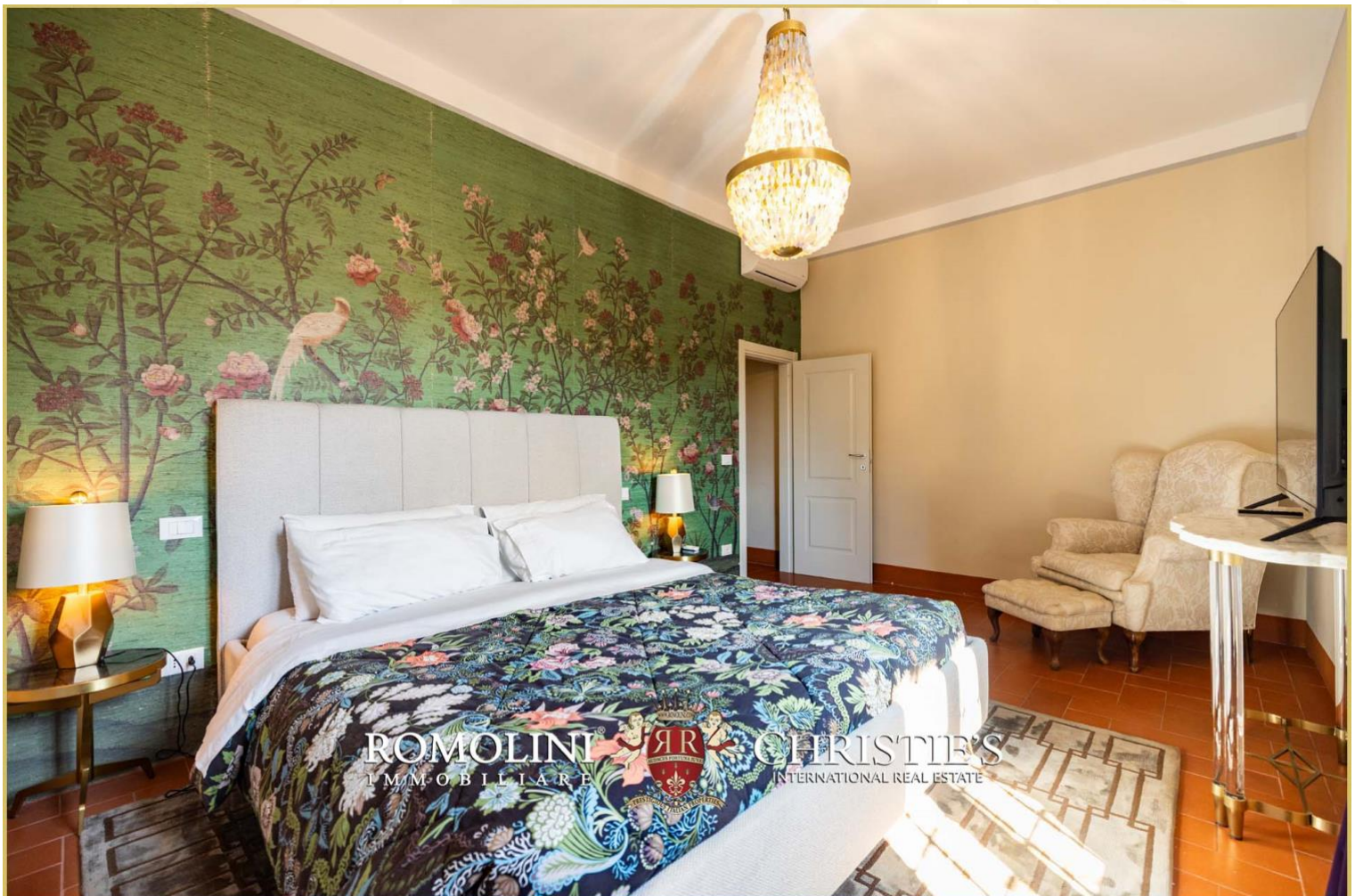
























ROMOLINI
I M M O B I L I A R E

CHRISTIE'S
INTERNATIONAL REAL ESTATE

FIND US ON
INSTAGRAM

VISITE OUR
YOUTUBE CHANNEL

AGENZIA ROMOLINI IMMOBILIARE S.R.L.

Piazza Torre di Berta n. 4

52037, Sansepolcro (AR), Tuscany, Italia

(+39) 0575 788 948

www.romolini.com

info@romolini.com