

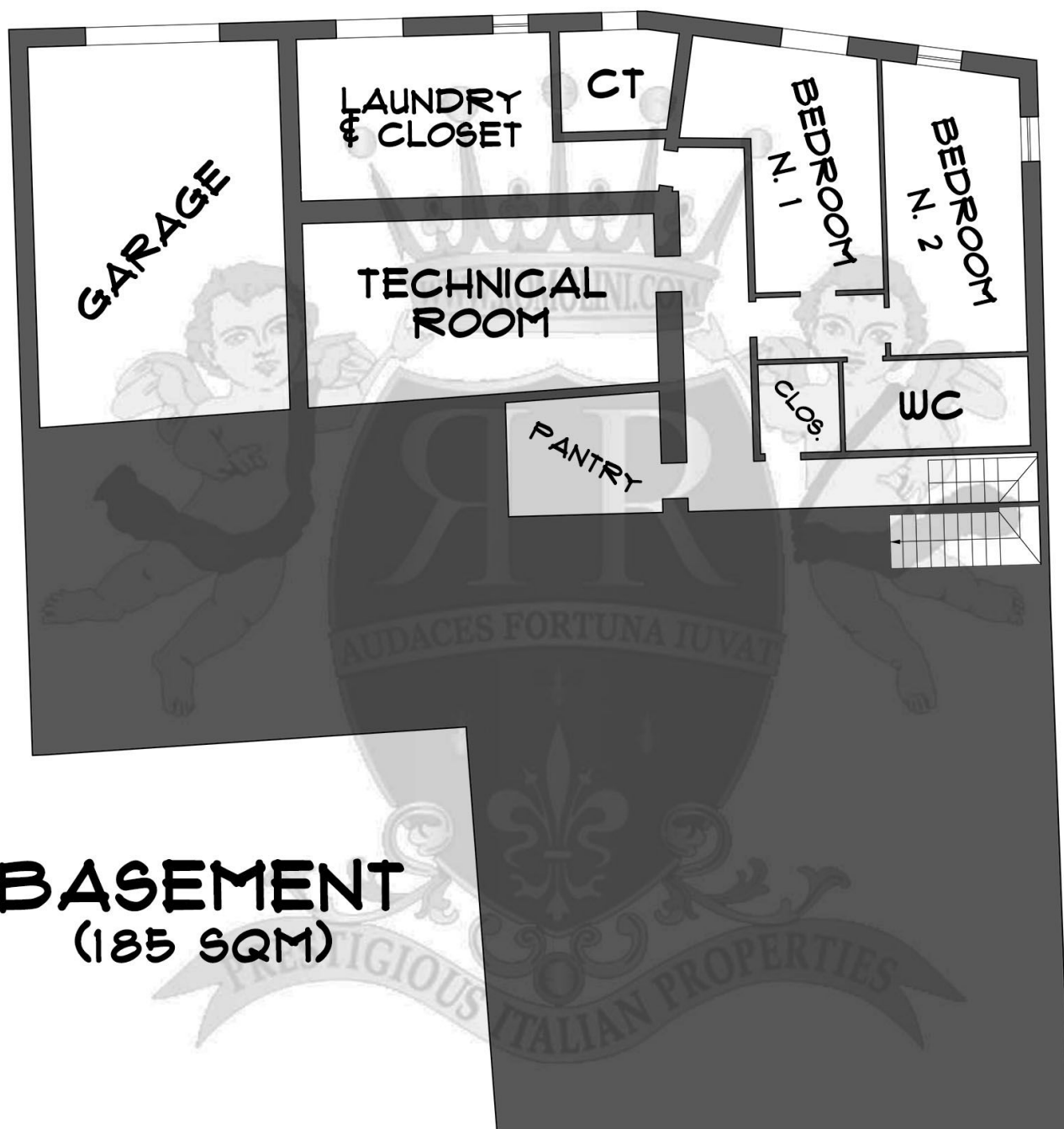


**ROMOLINI**  
IMMOBILIARE

**CHRISTIE'S**  
INTERNATIONAL REAL ESTATE

Ref. 2062

# VILLA VAL D'ORCIA



**BASEMENT**  
(185 SQM)

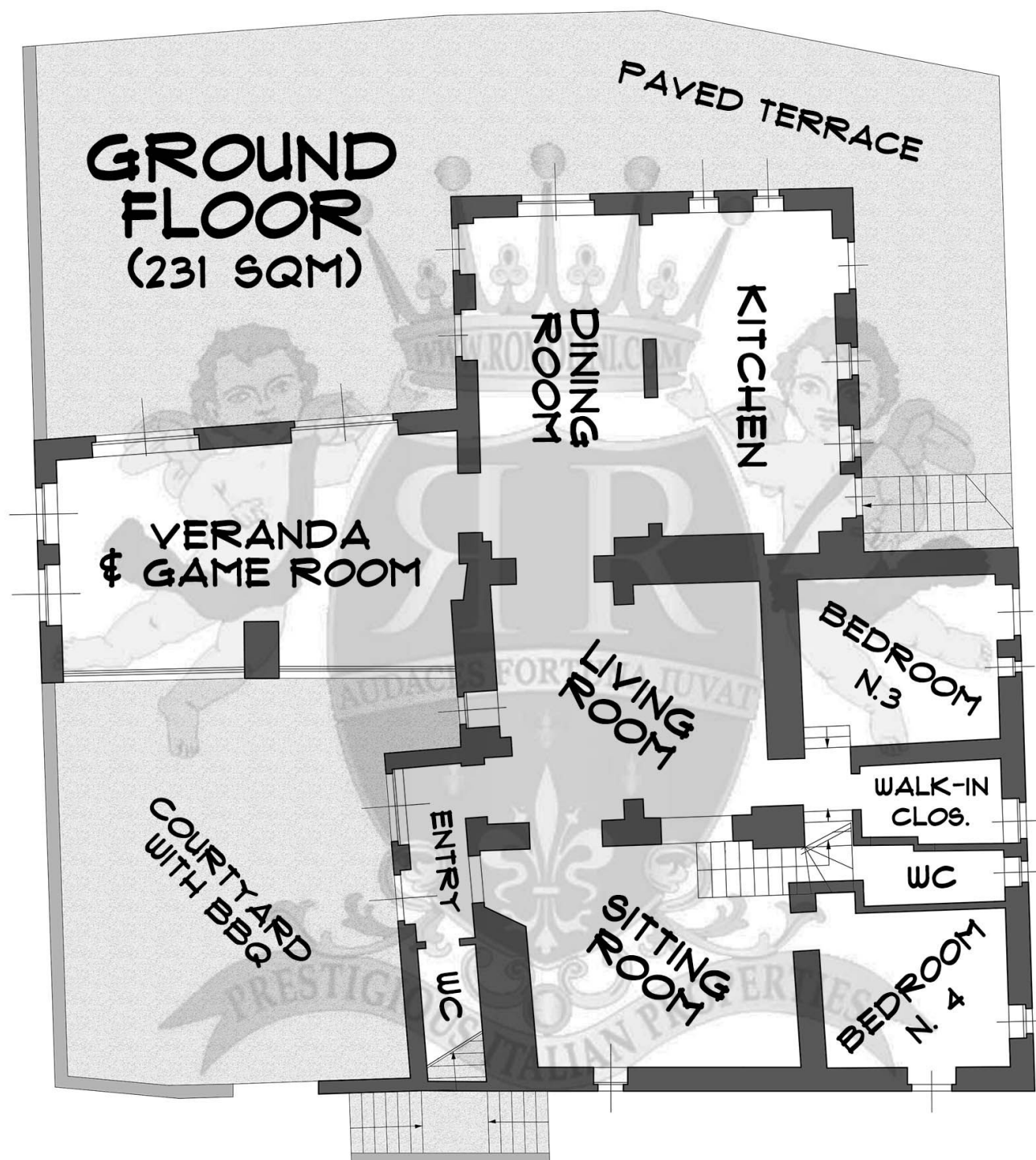
## IMPORTANT DISCLAIMER

This document has a merely illustrative purpose: measures are just indicative and should not be considered 100% accurate. For the correct size and proportions of the country house always refer to the official floor plans and *visure*.



**ROMOLINI**  
IMMOBILIARE

**CHRISTIE'S**  
INTERNATIONAL REAL ESTATE



**IMPORTANT DISCLAIMER**

This document has a merely illustrative purpose: measures are just indicative and should not be considered 100% accurate. For the correct size and proportions of the country house always refer to the official floor plans and *visure*.

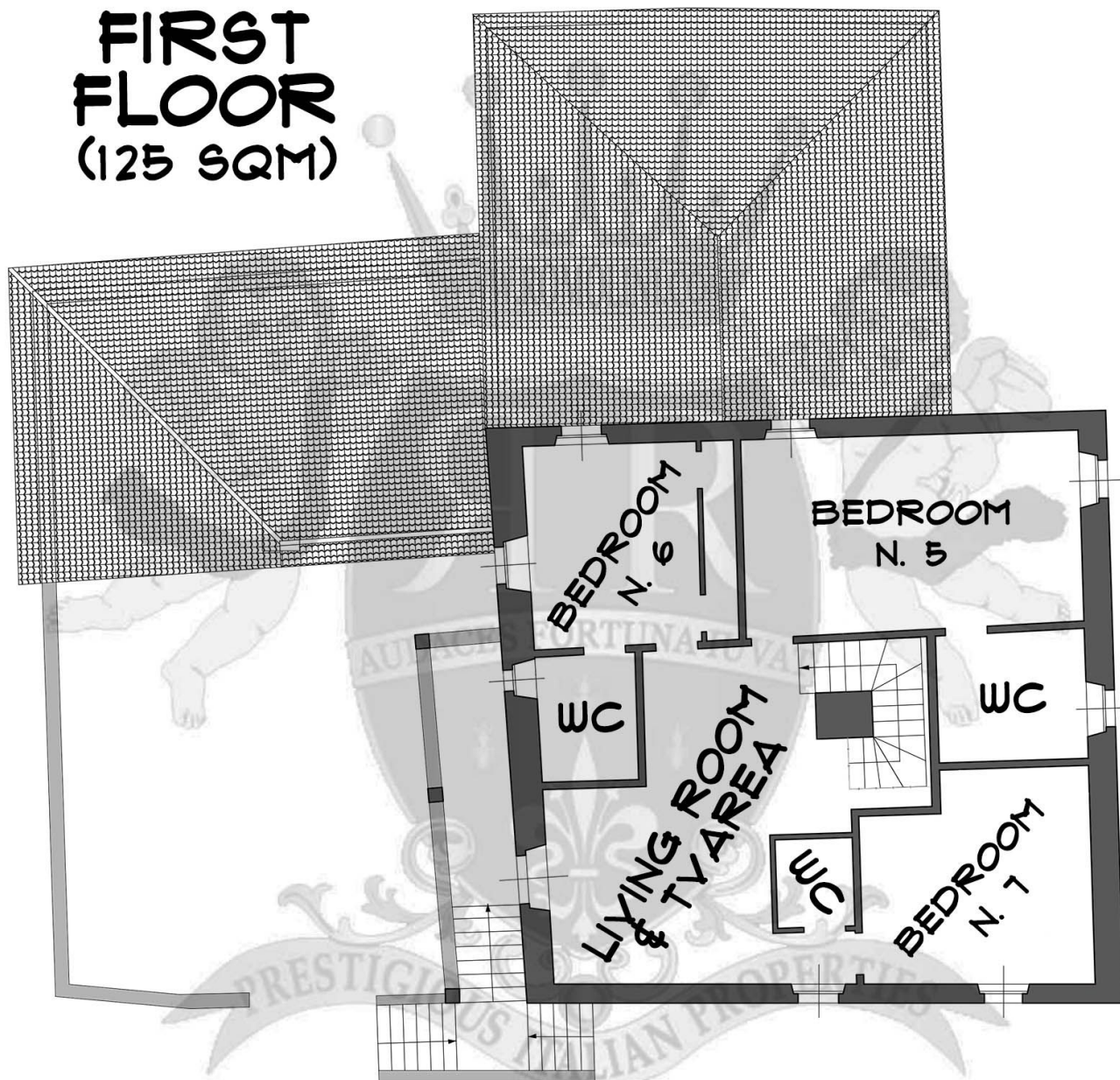




**ROMOLINI**  
IMMOBILIARE

**CHRISTIE'S**  
INTERNATIONAL REAL ESTATE

## FIRST FLOOR (125 SQM)



### IMPORTANT DISCLAIMER

This document has a merely illustrative purpose: measures are just indicative and should not be considered 100% accurate. For the correct size and proportions of the country house always refer to the official floor plans and *visure*.