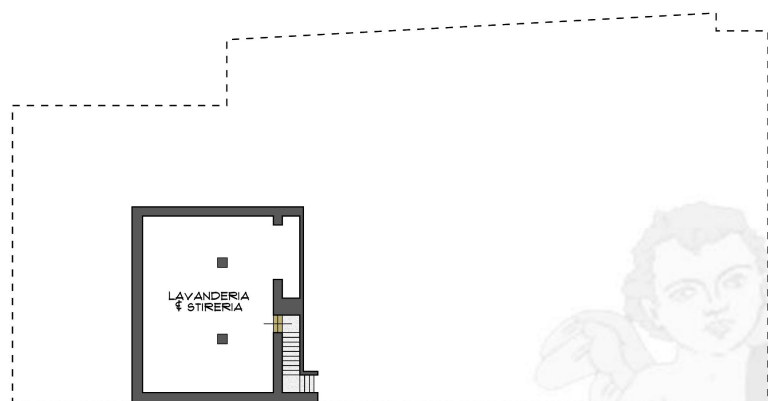


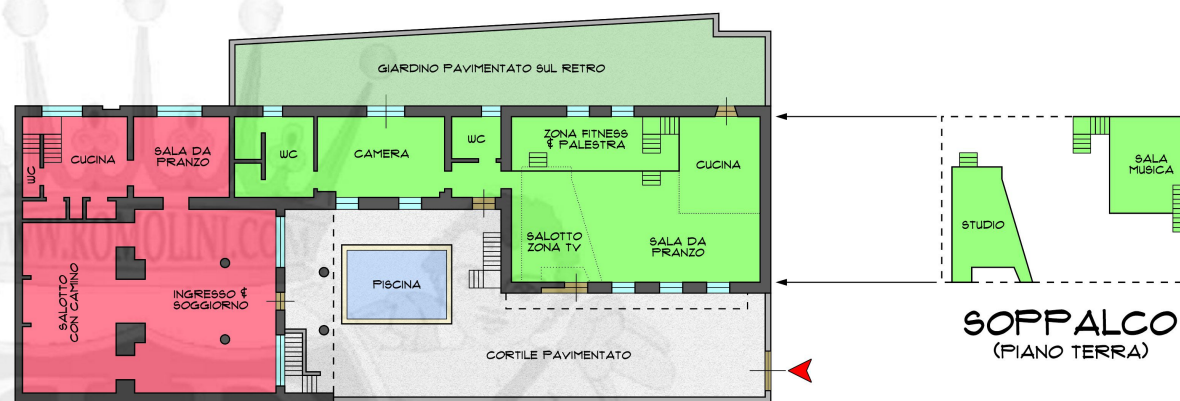


**ROMOLINI**  
IMMOBILIARE

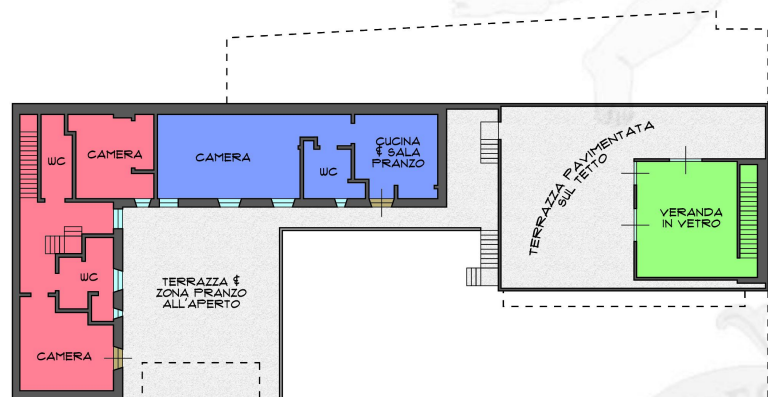
**CHRISTIE'S**  
INTERNATIONAL REAL ESTATE



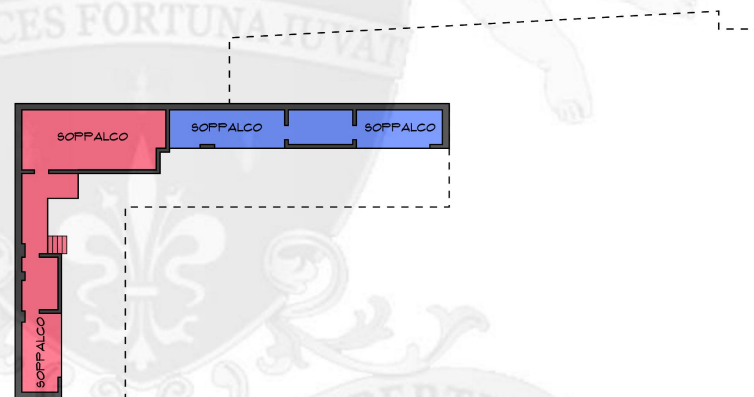
**SEMINTERRATO**



**PIANO TERRA**



**PIANO PRIMO**



**PIANO SECONDO**

## Rif. 1911

- UNITA 1 (290 MQ)
- UNITA 2 (90 MQ)
- UNITA 3 (340 MQ)

© Agenzia Romolini Immobiliare s.r.l.  
Via Trieste n. 10/c, 52031 Anghiari (AR), Italia  
Tel: +39 0575 788 948 – Fax: +39 0575 786 928 – Mail: info@romolini.com

\*\*\* Le misure sono approssimate.  
Per le dimensioni accurate al 100%  
siete pregati di consultare solo le  
planimetrie catastali dell'edificio.